



Welcome to Sundre!

<http://sundre.com/>

Location



gkr.imagery

- 100 km (1 hr) northwest of Calgary at the base of the Rocky Mountain foothills
- 100 km (1 hr) southwest of Red Deer on the Red Deer River





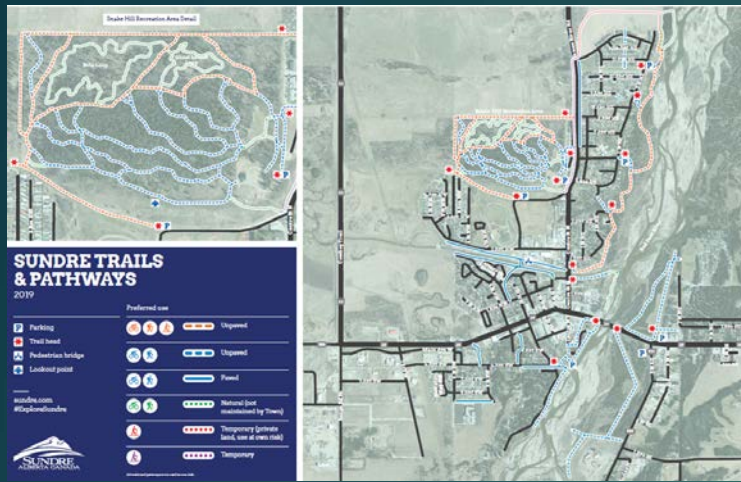
Town of Sundre

- Population: 2,729
- Median age: 44.9
- 23.6% of population 65+
- Economic Base:
 - Tourism
 - Agriculture
 - Lumber
 - Oil & Gas

Mountain View County



- Population: 13,074
- Median age: 45.2
- % population 65+: 15.6



- Aquaplex
- Performing arts centre
- Museum & pioneer village
- Rodeo grounds
- Greenwood Campground
- Curling club & rink
- Municipal library
- Community centre
- Ball diamonds
- Golf clubs

Recreation

Sundre Hospital and Care Centre

709 1 St NE
Sundre, AB
T0M 1X0
(403) 638-3033

- 24-hour active emergency
- 18 Active treatment beds
- 5 Auxiliary Beds
- 40 Nursing Home Beds
- Laboratory
- Community health services
- Family counselling
- Mental health services
- Social services
- Home care



Moose & Squirrel Medical Clinic

2-200 Main Avenue West
Sundre AB
T0M 1X0
(403) 638-4433

- 2 clinics in community
- 8 physicians in this practice
- Emergency medicine
- Pediatrics
- Obstetrics
- General Internal Medicine

