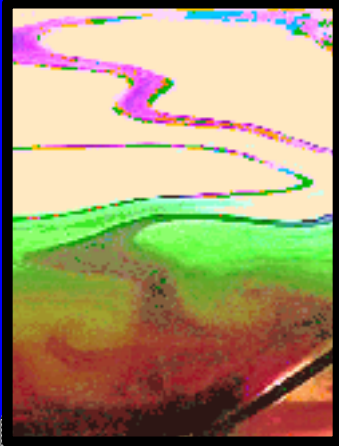


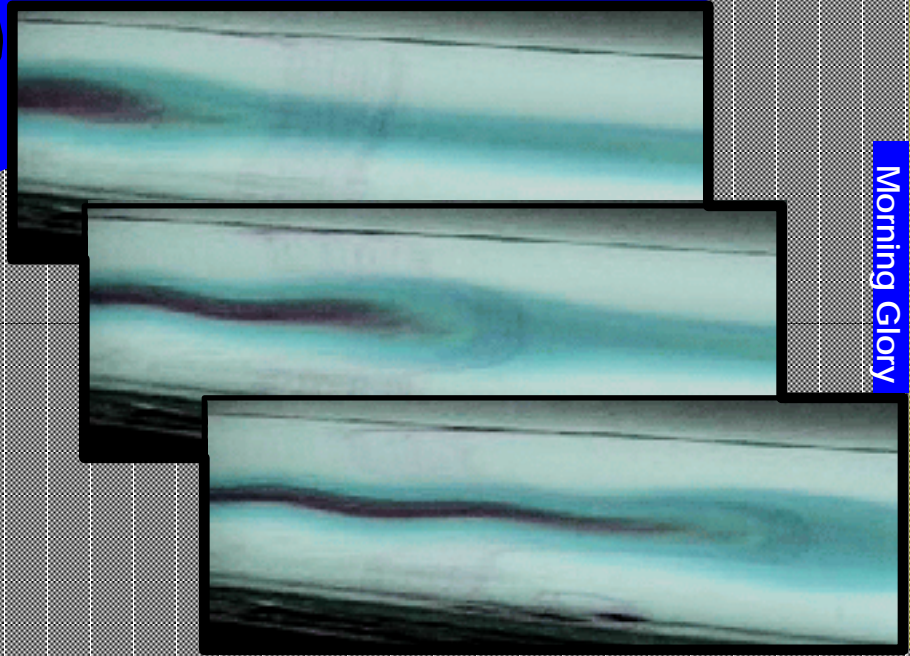
# The Environmental and Industrial Fluid Dynamics Laboratory

## Environmental Modelling

## Industrial Modelling



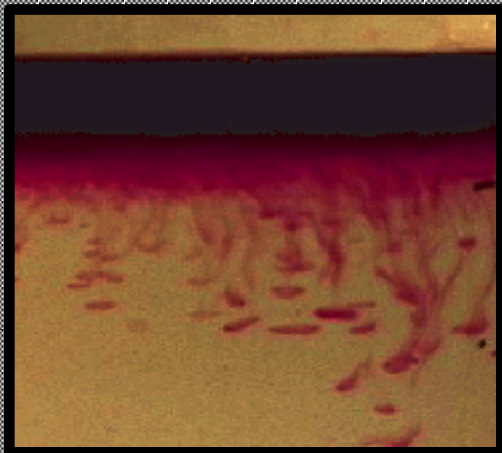
Mixing in Tailings Ponds



Morning Glory

## Mathematical and Numerical Analyses

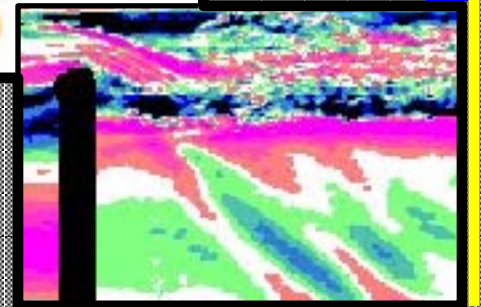
## Teaching and Summer School



salt-fingers



waves and turbulence



**Supporting sponsors:** The Applied Mathematics Institute, the Pacific Institute for the Mathematical Sciences, the University of Alberta

**Contact:** Bruce R. Sutherland, Director; **Phone:** (403) 492-0573; **FAX:** 492-6826;  
**Email:** [bruce.sutherland@ualberta.ca](mailto:bruce.sutherland@ualberta.ca); **Web:** <http://taylor.math.ualberta.ca/~eifl>