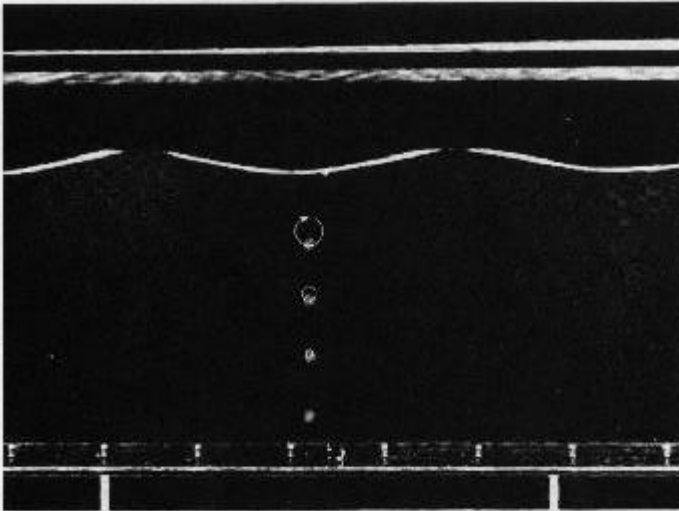


Surface Waves



1. Circular particle paths typical of periodic waves where wave length is comparable to or less than depth ("deep water waves").

Deep water waves.

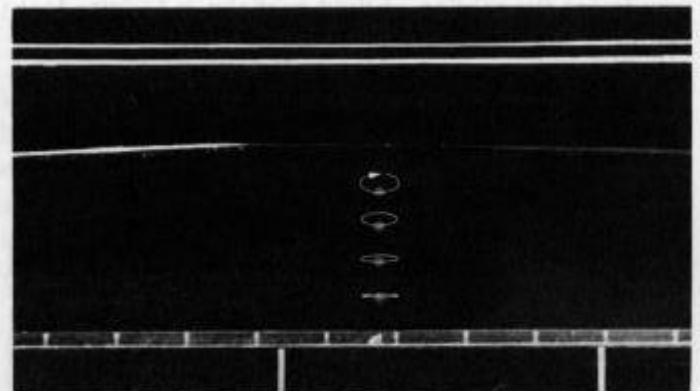
Fluid parcels follow circular orbits.

$$\omega^2 = gk$$

Shallow water waves.

Fluid parcels follow elliptical orbits.

$$\omega^2 = gH k^2$$



2. Elliptical particle paths typical of periodic waves where wave length is greater than depth ("shallow water waves").