



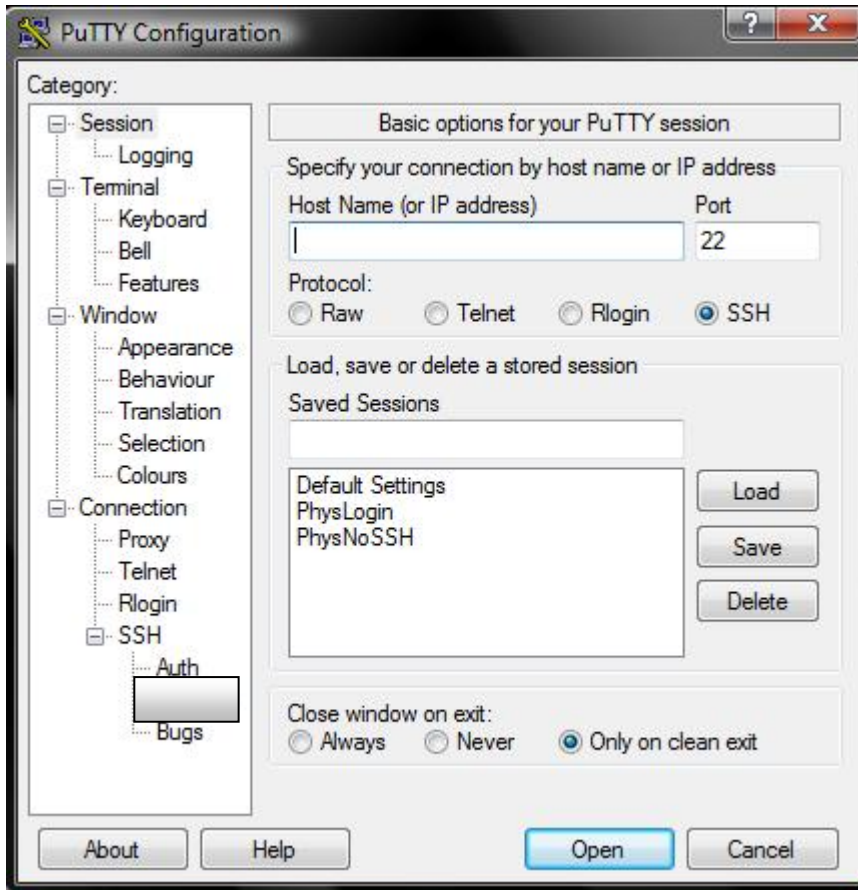
Xming and PuTTY windows icons

Xming is a windows X11 client which will allow you to open windows when using SSH protocols

PuTTY is a windows 'ssh' utility that will allow you to log onto the undergraduate computers (ugl)

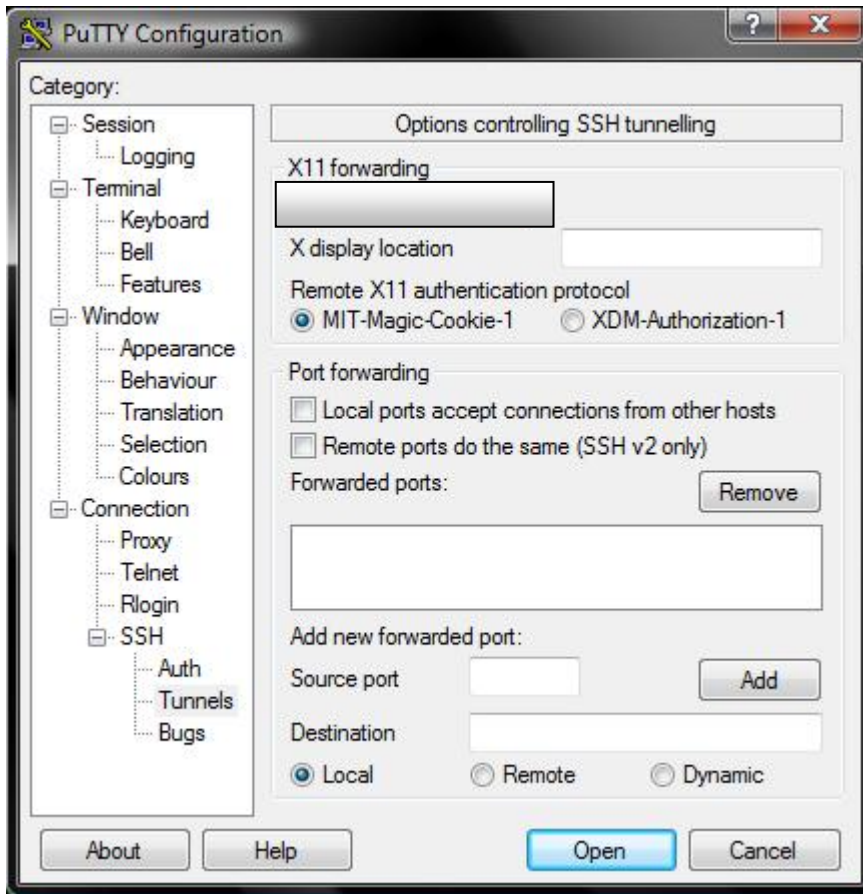


When you double click the Xming icon the program will start and show up in your task bar – red box

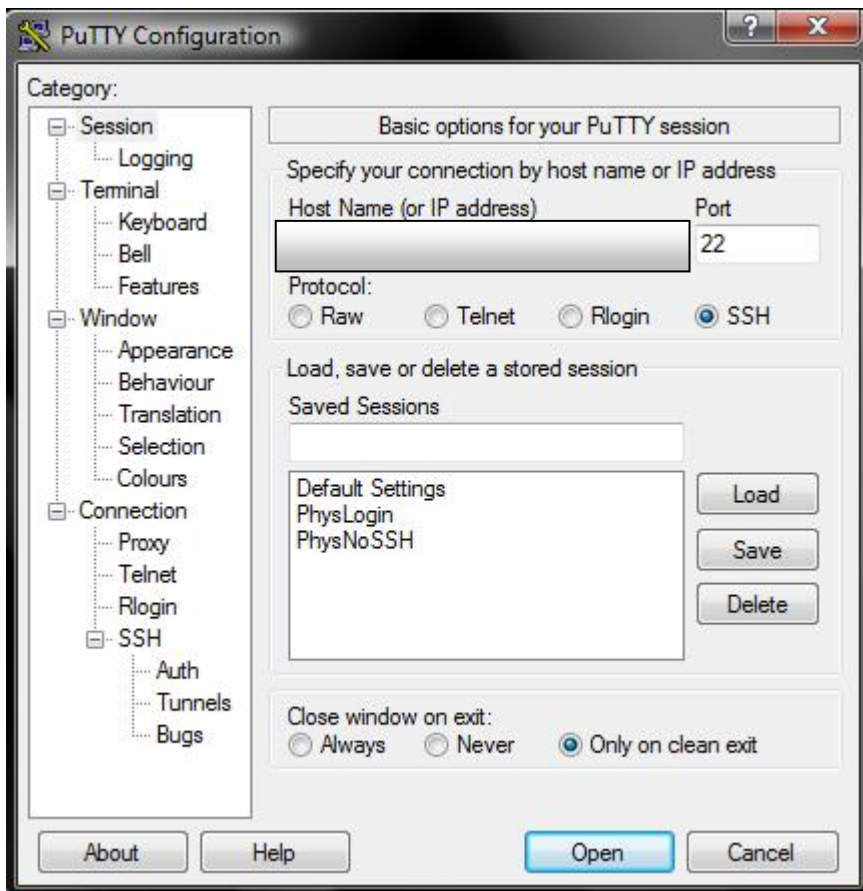


Opening PuTTY gives you the start up window. In order to use windows when logging into ugl you must enable X11 forwarding.

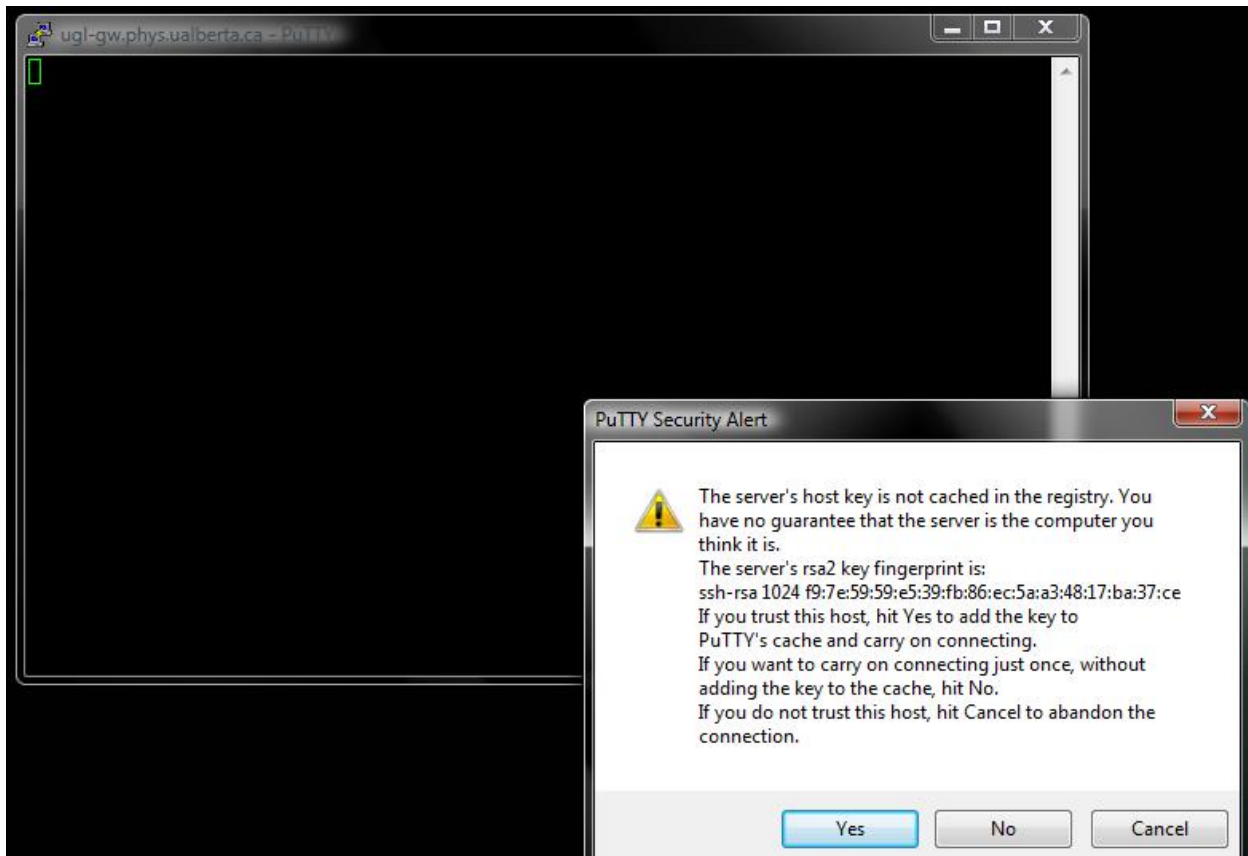
Do this by clicking on the "Tunnels" tab under "SSH"



Check the tab to enable X11 forwarding then click on the "Session" tab to back to the main PuTTY window.



In "Host Name (or IP address)" type "ugl-gw.phys.ualberta.ca"



A text window will open stating you've never logged onto this computer before and asking if you trust it. Select yes. The second window in the background is the terminal window in which you will have access to your 234 account (below).

Once you've selected yes, you will be prompted for your login ID and password. If your running on a MAC a terminal and SSH protocol are already installed, and you can follow the instructions on the Phys234 homepage. Use the "-X" for X11 forwarding

```
login as: kmurphy
kmurphy@ugl-gw.phys.ualberta.ca's password:
Last login: Tue Jan 20 14:19:19 2009 from ugl135

** NOTES **

- PBS web statistics at http://ugl-gw.phys.ualberta.ca/pbs/
- nodestatus command line utility now available.
- Intel compiler suite (f77/f90/C/C++) installed (ifc/icc)

[kmurphy@ugl-gw ~]$ ls
D0      lab01  Lab2.tar  Mail      qDFSa.gif  SSNq2.gif
Desktop lab02  lsb01    nsmail    qDFSb.gif  SSNq.gif
[kmurphy@ugl-gw ~]$
```