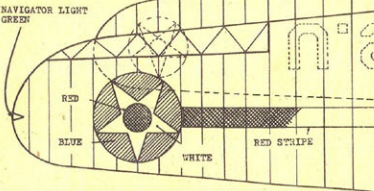
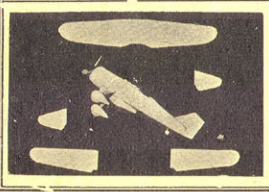
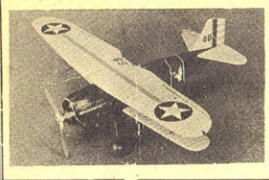


# CURTISS HAWK P-6 E

EXACT SCALE - 1/4" = 1'-0"  
KIT NO. B3 WINGSPAN - 7-3/4"



## COLOR SCHEME

WINGS AND TAIL SURFACES-ARMY YELLOW  
FUSELAGE-OLIVE DRAB  
DETAILS-BLACK AND SILVER

NOTE: PORTION ARE OF ACTUAL MODEL BUILT FROM THIS PLAN

DRAW LINES WITH RULING PEN

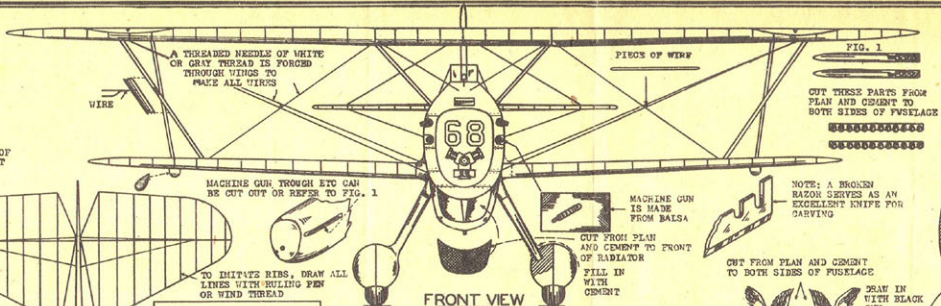
DRAW ALL LINES WITH A DRAFTSMAN'S RULING PEN AND BLACK INK

CUT LETTERS FROM PLAN AND CEMENT TO BOTTOM SIDE OF BOTTOM PANEL

# U.S.

TOP VIEW

# ARMY



MACHINE GUN THROUGH ETC CAN BE CUT OUT OR REFER TO FIG. 1

MACHINE GUN IS MADE FROM Balsa

CUT FROM PLAN AND CEMENT TO BOTH SIDES OF FUSELAGE

TO IMITATE RIBS, DRAW ALL LINES WITH RULING PEN OR WIND THREAD

FILL IN WITH CEMENT

TO MAKE RIVETS, DRAW THEM WITH PEN AND BLACK INK

PAPER STRIPES

PIECES OF PAPER

BLACK

WHITE TAIL PIN

RADIATOR

PIANO WIRE

RED

THE STAND FOR MODEL IS BUILT FROM Balsa AND CARDBOARD

CUT PARTS FROM CARDBOARD FIVE PIECES ARE REQUIRED

FINISHED STAND

### FRONT VIEW

GUN SIGHT IS MADE FROM Balsa

CARVE AIR SCOUT FROM Balsa

BLACK

WHITE

FINISHED STAND CAN BE PAINTED BLACK WITH SILVER TRIM.

WHITE

BLACK

WHITE

BLACK

WHITE

BLACK

WHITE

### SIDE VIEW

ZIPPER DRAWN IN WITH PEN AND INK

BLACK

WHITE

BLACK

WHITE

BLACK

WHITE

BLACK

WHITE

BLACK

WHITE

BLACK

### TOP VIEW

ZIPPER DRAWN IN WITH PEN AND INK

BLACK

WHITE

BLACK

WHITE

BLACK

WHITE

BLACK

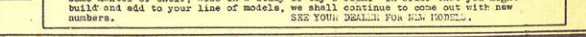
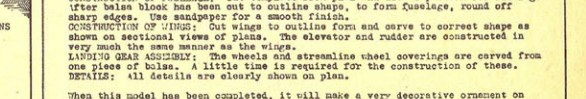
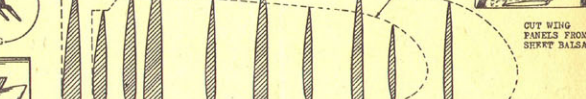
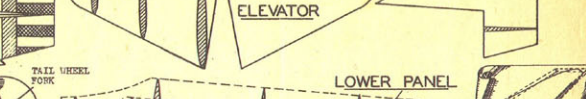
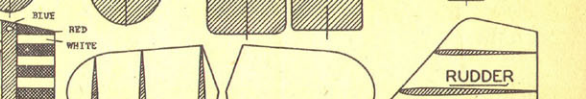
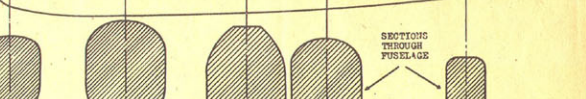
WHITE

BLACK

WHITE

BLACK

TRIPLATE DRAWN IS SIDE VIEW OF FUSELAGE. USE TOP VIEW AS PATTERN FOR TOP AND BOTTOM OF FUSELAGE



## • DIRECTIONS FOR BUILDING THIS SOLID SCALE MODEL •

The Curtiss Hawk P-6 E has been developed for the ARMY. It has a top speed of approximately 190 miles an hour. Every model builder is familiar with this model. Plans are drawn full size and exactly to scale.  
CONSTRUCTION OF FUSELAGE: Cut template from plan and use as pattern for fuselage after balsa block has been out to outline shape, to form fuselage, round off sharp edges. Use sandpaper for a smooth finish.  
CONSTRUCTION OF WINGS: Cut wings to outline form and serve to correct shape as shown on sectional views of plans. The elevator and rudder are constructed in very much the same manner as the wings.  
LANDING GEAR ASSEMBLY: The wheels and streamlining wheel coverings are carved from one piece of balsa. A little time is required for the construction of these. DETAILS: all details are clearly shown on plan.

When this model has been completed, it will make a very decorative ornament on some mantel or shelf, also in a study or boy's room. In order that you might build and add to your line of models, we shall continue to come out with new numbers. SEE YOUR DEALER FOR KIT MODEL.