

## Interactive microbial genome visualization with GView

Aaron Petkau<sup>1,2</sup>, Matthew Stuart-Edwards<sup>1,2</sup>, Paul Stothard<sup>3</sup>  
and Gary Van Domselaar<sup>1,2,\*</sup>

<sup>1</sup>National Microbiology Laboratory – Public Health Agency of Canada, 1015 Arlington Street, Winnipeg, Manitoba, R3E 3R2, Canada, <sup>2</sup>Department of Computer Science, University of Manitoba, R3T 2N2, Canada and <sup>3</sup>Department of Agricultural, Food and Nutritional Science, University of Alberta, Edmonton, Alberta, Canada T6G 2C8

Associate Editor: Alfonso Valencia

### ABSTRACT

**Summary:** GView is a Java application for viewing and examining prokaryotic genomes in a circular or linear context. It accepts standard sequence file formats and an optional style specification file to generate customizable, publication quality genome maps in bitmap and scalable vector graphics formats. GView features an interactive pan-and-zoom interface, a command-line interface for incorporation in genome analysis pipelines, and a public Application Programming Interface for incorporation in other Java applications.

**Availability:** GView is a freely available application licensed under the GNU Public License. The application, source code, documentation, file specifications, tutorials and image galleries are available at <http://gview.ca>

**Contact:** [gary.van.domselaar@phac-aspc.gc.ca](mailto:gary.van.domselaar@phac-aspc.gc.ca)

Received on July 26, 2010; revised on September 28, 2010; accepted on October 13, 2010

### 1 INTRODUCTION

The commercial introduction of next-generation sequencing technology has reduced the time and expense of genome sequencing to such an extent that it is now possible for virtually any microbiology lab to generate genome sequences for the microorganisms that they study. Visualizing the genomic features contained in these sequences is important to aid biologists in understanding the genetic basis of microbial traits, and to convey this information to others. A number of software packages already exist for this purpose (Supplementary Table 1). Early software packages like GenomePlot (Gibson and Smith, 2003) and GenoMap (Sato and Ehira, 2003) generate circular genome maps in bitmap (PNG, JPG) formats, but do not support standard sequence file formats and have limited customizability. CGView (Stothard and Wishart, 2005) and Circos (Krzywinski *et al.*, 2009) can generate very high quality, highly customizable circular maps in bitmap and scalable vector graphics (SVG) formats, and can be incorporated in pipelines, but have limited interactivity, and like their predecessors, require custom input formats. DNAPlotter (Carver *et al.*, 2009) generates interactive, high quality, customizable circular and linear maps, but does not support SVG image output, and cannot save the customizations applied to a genome map for later use. The motivation behind GView is to provide in a single application the

best features of all these microbial genome viewing packages: ease-of-use; customizability; interactivity; ability to generate circular and linear maps; ability to read standard sequence file formats; ready incorporation in pipelines and third-party applications; and the ability to generate aesthetically pleasing, publication quality image output.

### 2 IMPLEMENTATION

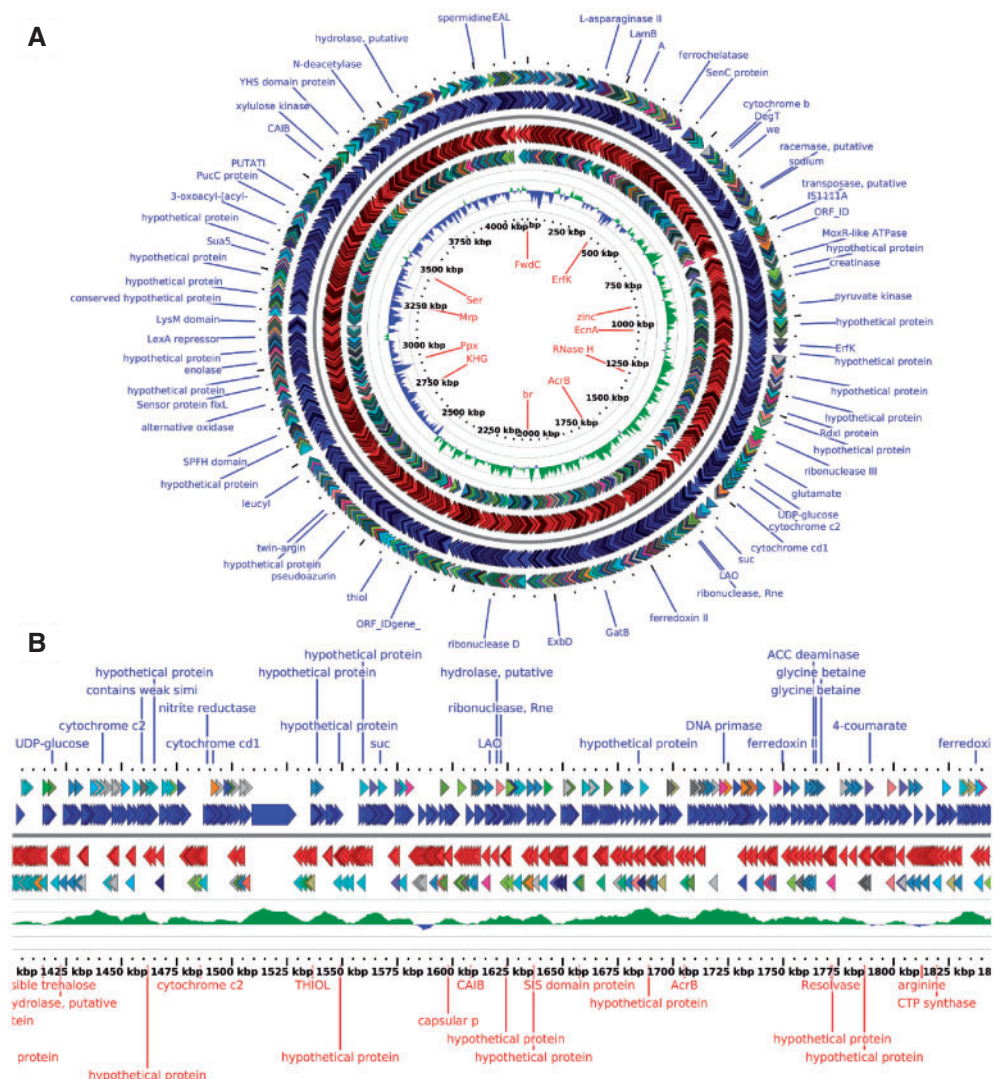
GView is a complete rewrite of the CGView Java package that preserves the best features of the original application. Genome features and feature labels are displayed in tracks above and below the genome backbone. Graphs can be generated to display feature-level properties (e.g. BLAST atlases) or sequence-level properties (e.g. GC content, GC skew). Optional feature legends can be displayed inline with the map image or as a separate image. Maps can be output in bitmap (PNG, JPG) or vector (SVG) formats for use in web pages and publications, or for additional customization in image editing programs (Fig. 1).

GView maintains support for pipelining applications via a command-line interface with options to define image dimensions, zoom level and a subregion of the map on which to centre the display. The Application Programming Interface (API) has been substantially reworked to make incorporation in third party Java programs simpler and more straightforward. The new API includes additional support for making selections to the features, tracks and regions of the map.

GView also contains substantial new functionality relative to the original CGView. Genome maps can now be generated with circular or linear layouts. A ‘wrapped’ linear layout, similar to that available in DNAPlotter, is planned for a future release. Dynamic panning and zooming allows direct interaction with the map via familiar keyboard and mouse controls, and is useful to quickly navigate to biologically interesting subregions of the map for detailed exploration. To aid in navigating maps at high zoom levels, an optional ‘bird’s eye view’ is available that displays and adjusts the current view in the context of the entire genome map. A new feature label placing algorithm keeps label positions stable while zooming in and out of the map (Been, 2006).

File compatibility has been improved considerably compared to CGView. GView incorporates the BioJava libraries (Holland *et al.*, 2008) to read common genome sequence file formats (EMBL, GFF, Genbank). Backwards compatibility is maintained with the original CGView XML to customize the appearance of the genome map. In addition, GView introduces a new style specification file format—termed ‘Genome Style Sheet’ (GSS)—designed to make

\*To whom correspondence should be addressed.



**Fig. 1.** (A) A circular genome plot for *Roseobacter dentrificans* with tracks showing genes on forward and reverse strands, COG categories, GC skew and automatically generated labels. (B) A linear view of a subregion from (A).

genome map customization easier for biologists without computer programming backgrounds and less cumbersome than most GUI-based style customization interfaces. Based on the Cascading Style Sheet specification already in widespread use for applying style information to HTML documents, the GSS specification provides a clean separation of content and style, thus a single GSS file can be used to apply a common style to a set of genome sequences and associated graphs. The GSS format supports the arbitrary grouping of the various map elements into sets, and styles can be quickly applied to that set. By combining this grouping ability with the ability to operate on the feature keys, specifiers, and genome coordinates contained in the genome sequence file (and graph data files), the GSS format provides a highly compact, intuitive and powerful style application ability while retaining the high customizability of the original CGView XML.

*Funding:* Canada's National Microbiology Laboratory.

*Conflict of Interest:* none declared.

## REFERENCES

- Been, K. (2006) Dynamic map labeling. *IEEE Trans. Visual. Comp. Graph.*, **12**, 773–780.
- Carver, T. et al. (2009) DNAPlotter: circular and linear interactive genome visualization. *Bioinformatics*, **25**, 119–120.
- Gibson, R. and Smith, D.R. (2003) Genome visualization made fast and simple. *Bioinformatics*, **19**, 1449–1450.
- Holland, R.C. et al. (2008) BioJava: an open-source framework for bioinformatics. *Bioinformatics*, **24**, 2096–2097.
- Krzywinski, M. et al. (2009) Circos: an information aesthetic for comparative genomics. *Genome Res.*, **19**, 1639–1645.
- Sato, N. and Ehira, S. (2003) GenoMap, a circular genome data viewer. *Bioinformatics*, **19**, 1583–1584.
- Stothard, P. and Wishart, D.S. (2005) Circular genome visualization and exploration using CGView. *Bioinformatics*, **21**, 537–539.