

# PATHWAYS TO RESEARCH PARTNERSHIP GRANTS

Are you a not-for-profit organization wanting to partner with University of Alberta researchers to generate benefits for communities and society at large?

Federal Government (SSHRC) funded Partnership Grants provide support for formal partnerships between post-secondary institutions and not-for-profit, public or private organizations to advance research, research training and knowledge mobilization in the social sciences and humanities through

mutual cooperation and sharing of intellectual leadership. Value: up to \$2.5 million over 4–7 years.

Formal partnerships can be new or existing, and they require sophisticated collaborations between university researchers and community partners with dense networks.

**How do you get there?**



Through CSL, meet a professor and get to know each other by working together on a course with a student learning project



**Gain a CSL Small Grant to develop a project (\$4000)**

Applications are accepted twice a year (Spring and Fall)



**Encourage your faculty researcher to become a CSL Engaged Scholar for a year**

*(1 course release funded by Arts)*

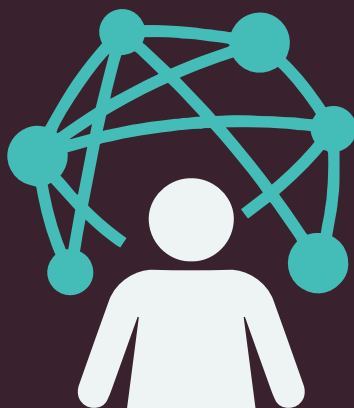


**Gain a CSL Partnership Grant to pilot your research (\$30,000 over 2 years)**



**Gain a KIAS Research Team Grant to expand your team and work on research questions (\$7500)**

Applications on a rolling basis



**Gain a KIAS Research Cluster Grant to scale up your networks, research aims and impacts (up to \$100,000 over 3 years)**

Annual call for applications in Fall



**Gain your Partnership Grant**

Take advantage of the U of A Grant Assist Program's resources to draft your Partnership Grant application ([www.sshrc.ualberta.ca](http://www.sshrc.ualberta.ca))



For more information on how we can help build partnerships, visit the CSL and KIAS websites or send us an email

[www.ualberta.ca/community-service-learning](http://www.ualberta.ca/community-service-learning) | [cslinfo@ualberta.ca](mailto:cslinfo@ualberta.ca)

[www.ualberta.ca/kule-institute](http://www.ualberta.ca/kule-institute) | [kias@ualberta.ca](mailto:kias@ualberta.ca)