

# PATHWAYS TO A SSHRC PARTNERSHIP GRANT WITH NOT-FOR-PROFIT ORGANIZATIONS

Do you want to work in collaboration with the community to generate research with social impact?

SSHRC Partnership Grants provide support for formal partnerships between post-secondary institutions and not-for-profit, public or private organizations to advance research, research training and knowledge mobilization in the social sciences and humanities through mutual cooperation and sharing

of intellectual leadership. Value: up to \$2.5 million over 4–7 years.

Formal partnerships can be new or existing, and they require sophisticated collaborations between university researchers and community partners with dense networks.

## How do you get there with Not-for-Profits?



Teach a course with CSL and meet a community partner



Gain a CSL Small Grant to develop a project (\$4000)

Applications are accepted twice a year (Spring and Fall)



Become a CSL Engaged Scholar for a year

(1 course release funded by Arts)

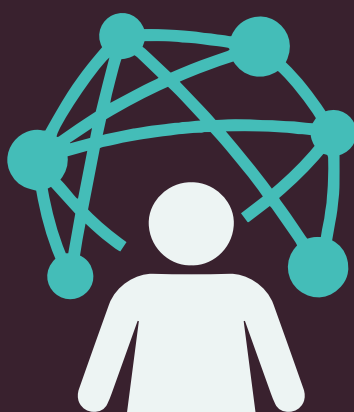


Gain a CSL Partnership Grant to pilot the research (\$30,000 over 2 years)



Gain a KIAS Research Team Grant to form a team and work on research questions (\$7500)

Applications on a rolling basis



Gain a KIAS Research Cluster Grant to scale up your networks, research aims and impacts (up to \$100,000 over 3 years)

Annual call for applications in Fall



Gain SSHRC Partnership Grant

Take advantage of the U of A Grant Assist Program's resources to draft your SSHRC application ([www.sshrc.ualberta.ca](http://www.sshrc.ualberta.ca))



For more information on how we can help build partnerships, visit the CSL and KIAS websites or send us an email

[www.ualberta.ca/community-service-learning](http://www.ualberta.ca/community-service-learning) | [cslinfo@ualberta.ca](mailto:cslinfo@ualberta.ca)

[www.ualberta.ca/kule-institute](http://www.ualberta.ca/kule-institute) | [kias@ualberta.ca](mailto:kias@ualberta.ca)