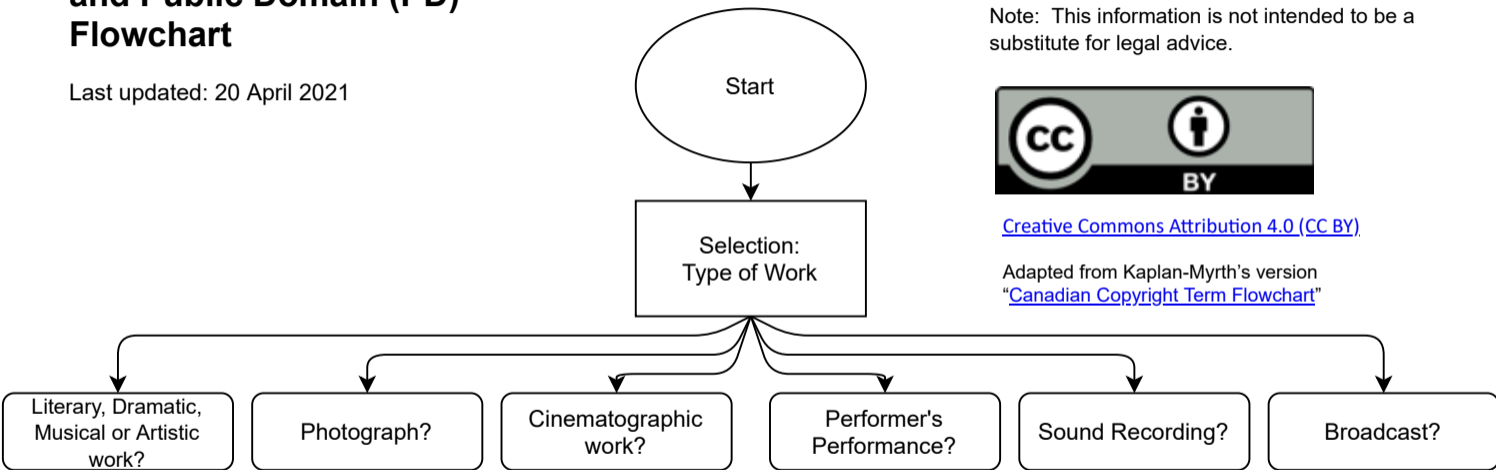


Canadian Copyright Term and Public Domain (PD) Flowchart

Last updated: 20 April 2021



Prepared by:
Copyright Office, University of Alberta

Note: This information is not intended to be a substitute for legal advice.



[Creative Commons Attribution 4.0 \(CC BY\)](https://creativecommons.org/licenses/by/4.0/)

Adapted from Kaplan-Myrth's version
["Canadian Copyright Term Flowchart"](#)

Canadian Copyright Term and Public Domain (PD) Flowchart

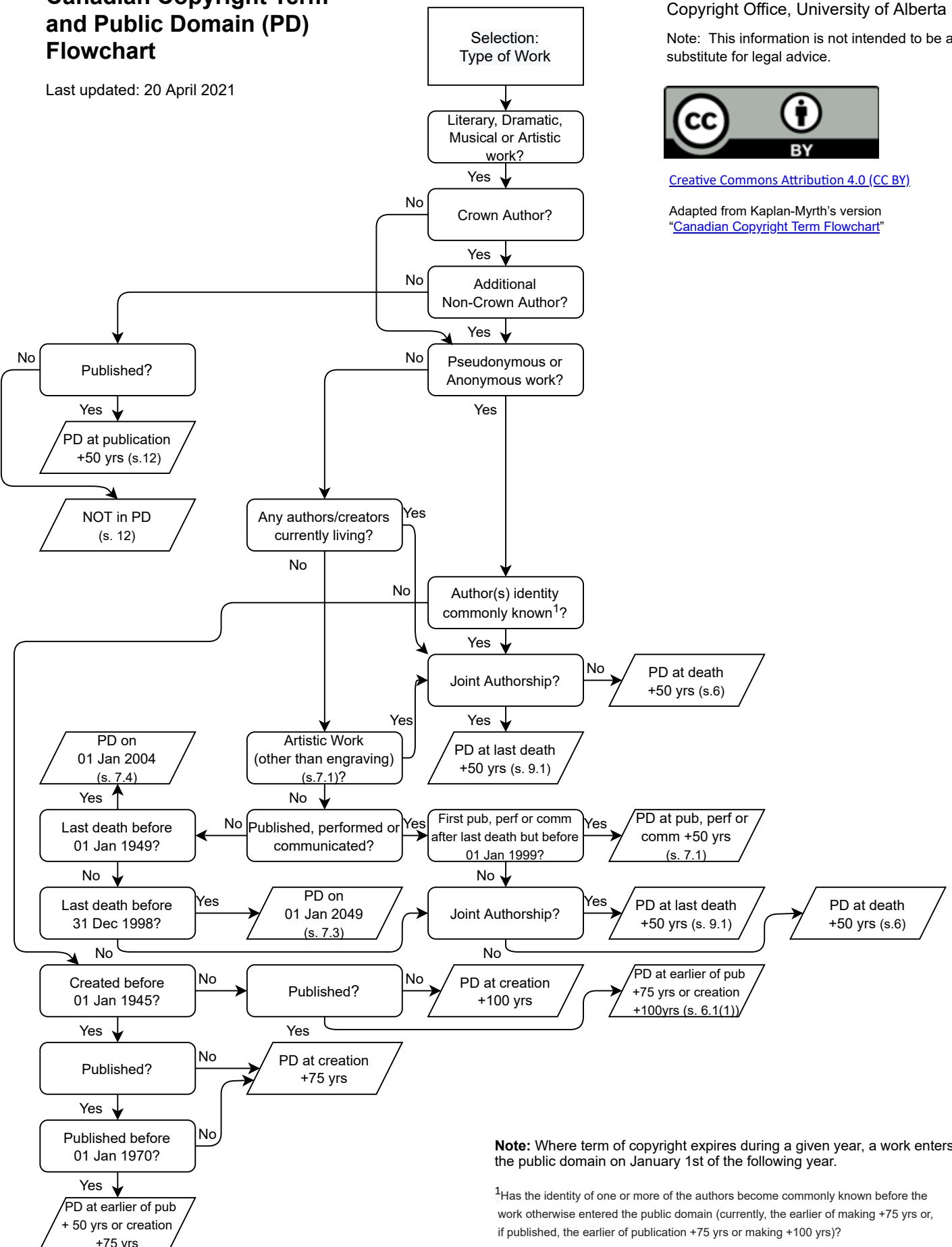
Last updated: 20 April 2021

Prepared by:
Copyright Office, University of Alberta
Note: This information is not intended to be a substitute for legal advice.



[Creative Commons Attribution 4.0 \(CC BY\)](https://creativecommons.org/licenses/by/4.0/)

Adapted from Kaplan-Myrth's version
"Canadian Copyright Term Flowchart"



Note: Where term of copyright expires during a given year, a work enters the public domain on January 1st of the following year.

¹Has the identity of one or more of the authors become commonly known before the work otherwise entered the public domain (currently, the earlier of making +75 yrs or, if published, the earlier of publication +75 yrs or making +100 yrs)?

Canadian Copyright Term and Public Domain (PD) Flowchart

Last updated: 20 April 2021

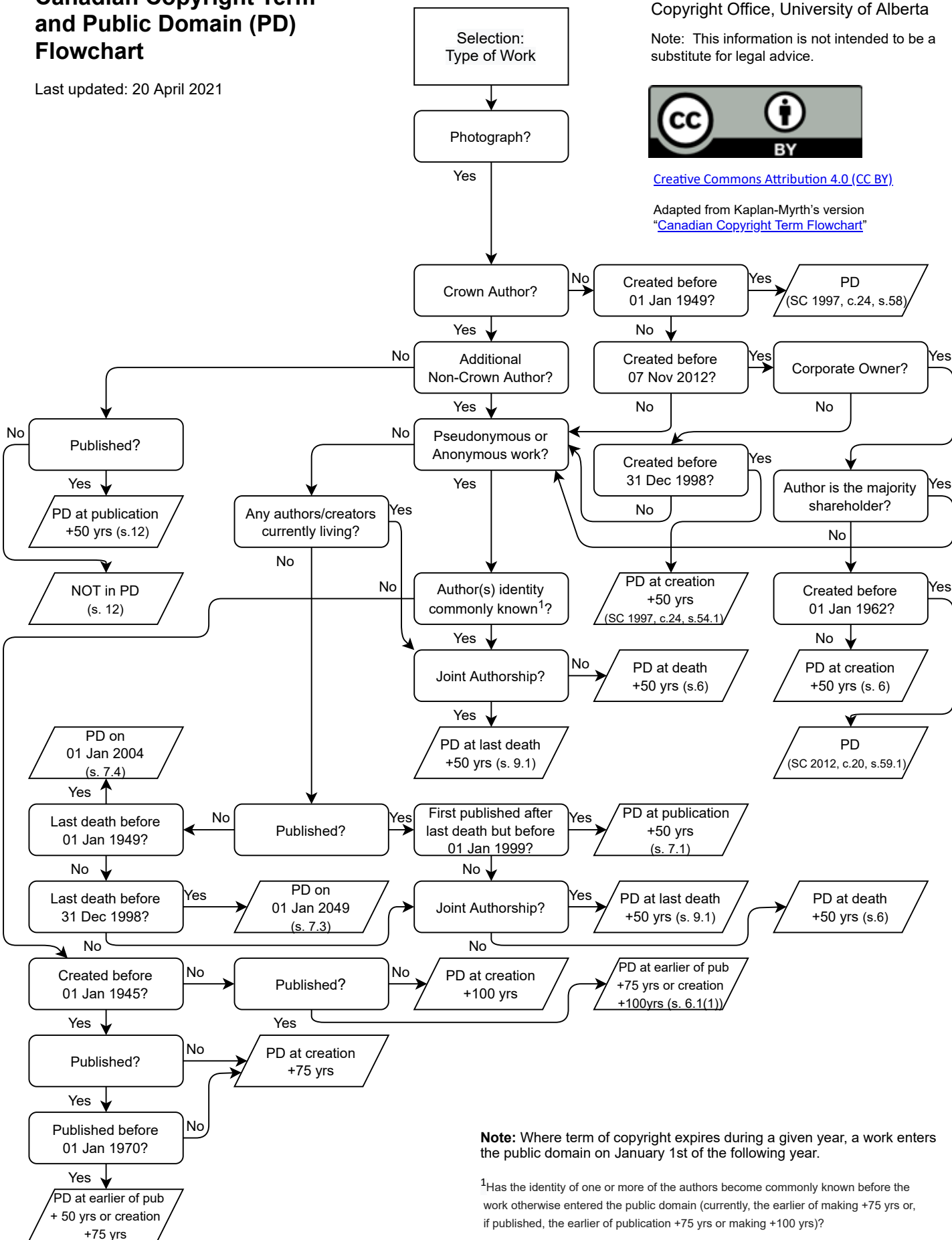
Prepared by:
Copyright Office, University of Alberta

Note: This information is not intended to be a substitute for legal advice.



[Creative Commons Attribution 4.0 \(CC BY\)](https://creativecommons.org/licenses/by/4.0/)

Adapted from Kaplan-Myrth's version
"Canadian Copyright Term Flowchart"



Note: Where term of copyright expires during a given year, a work enters the public domain on January 1st of the following year.

¹Has the identity of one or more of the authors become commonly known before the work otherwise entered the public domain (currently, the earlier of making +75 yrs or, if published, the earlier of publication +75 yrs or making +100 yrs)?

Canadian Copyright Term and Public Domain (PD) Flowchart

Last updated: 20 April 2021

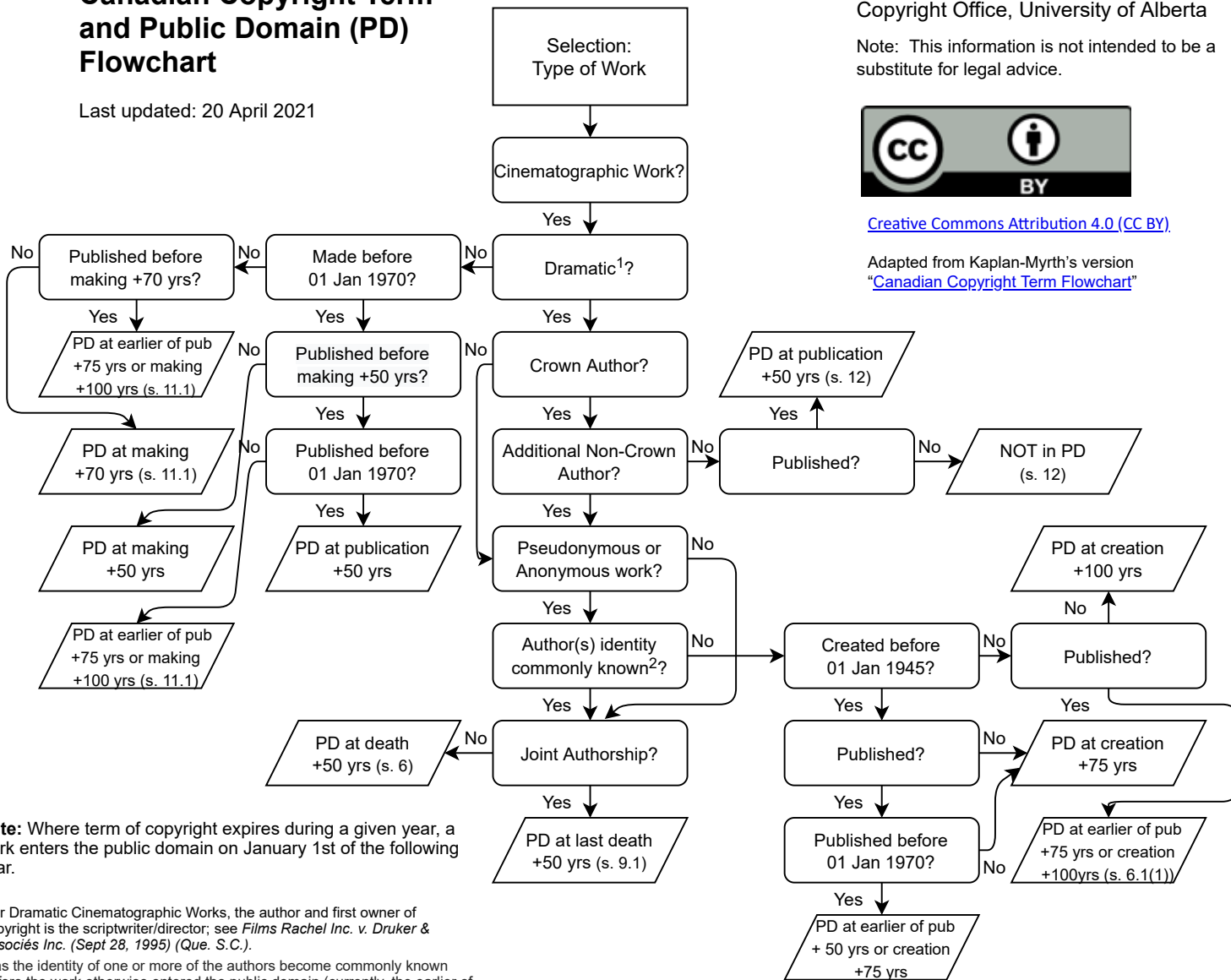
Prepared by:
Copyright Office, University of Alberta

Note: This information is not intended to be a substitute for legal advice.



[Creative Commons Attribution 4.0 \(CC BY\)](https://creativecommons.org/licenses/by/4.0/)

Adapted from Kaplan-Myrth's version
"Canadian Copyright Term Flowchart"



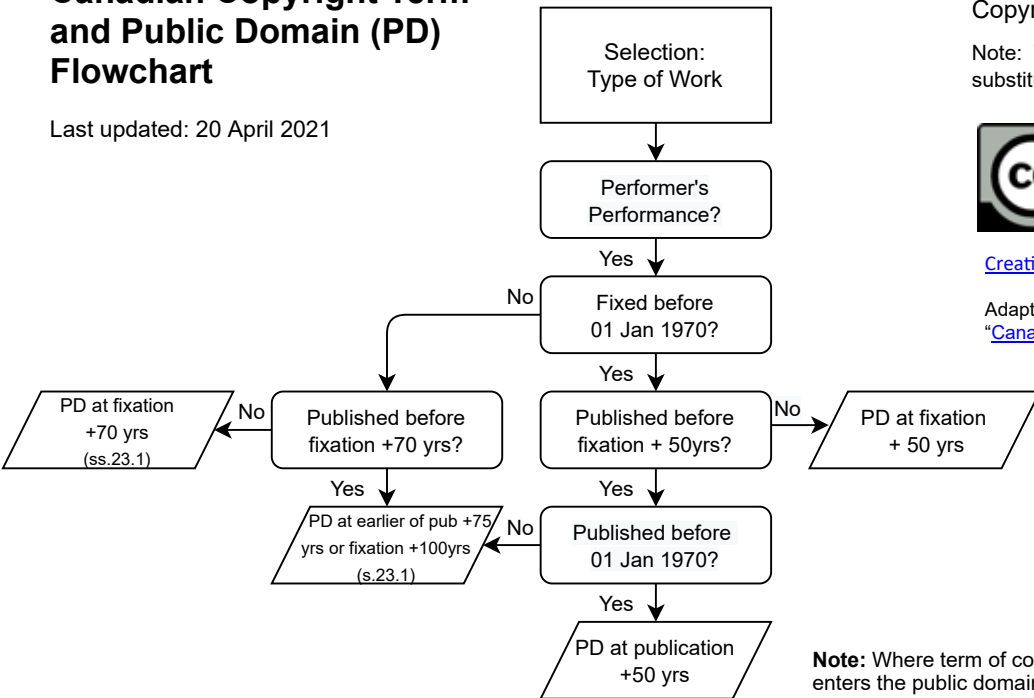
Note: Where term of copyright expires during a given year, a work enters the public domain on January 1st of the following year.

¹For Dramatic Cinematographic Works, the author and first owner of copyright is the scriptwriter/director; see *Films Rachel Inc. v. Druker & Associés Inc.* (Sept 28, 1995) (Que. S.C.).

²Has the identity of one or more of the authors become commonly known before the work otherwise entered the public domain (currently, the earlier of making +75 yrs or, if published, the earlier of publication +75 yrs or making +100 yrs)?

Canadian Copyright Term and Public Domain (PD) Flowchart

Last updated: 20 April 2021



Prepared by:
Copyright Office, University of Alberta

Note: This information is not intended to be a substitute for legal advice.



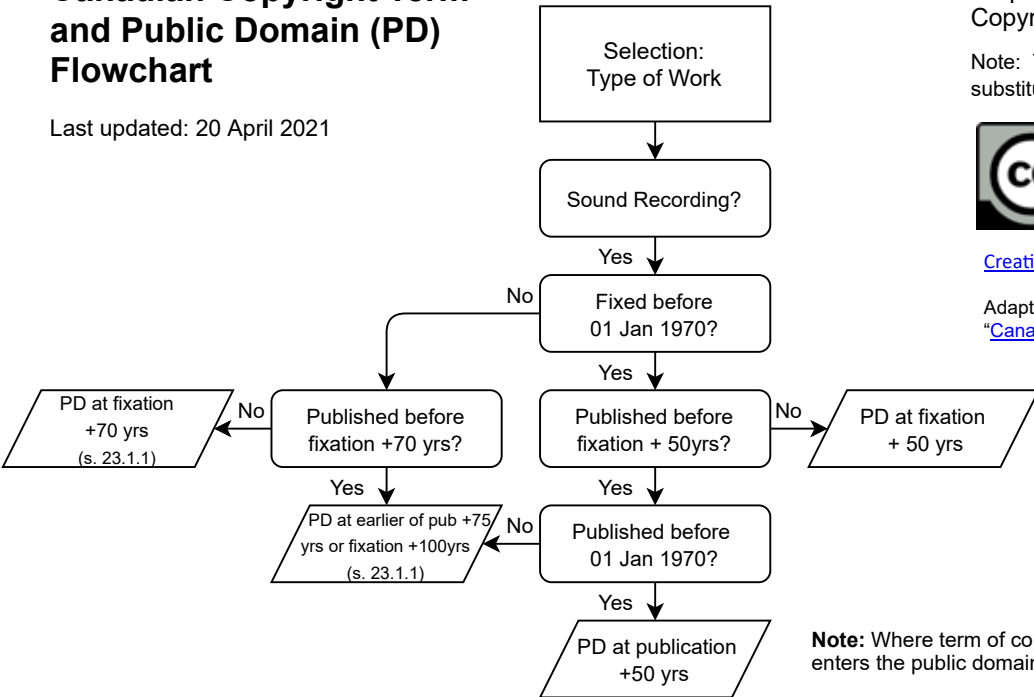
[Creative Commons Attribution 4.0 \(CC BY\)](https://creativecommons.org/licenses/by/4.0/)

Adapted from Kaplan-Myrth's version
["Canadian Copyright Term Flowchart"](#)

Note: Where term of copyright expires during a given year, a work enters the public domain on January 1st of the following year.

Canadian Copyright Term and Public Domain (PD) Flowchart

Last updated: 20 April 2021



Prepared by:
Copyright Office, University of Alberta

Note: This information is not intended to be a substitute for legal advice.



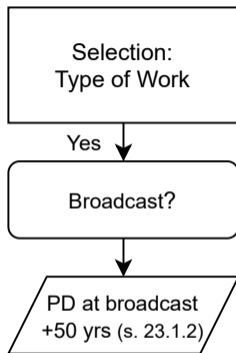
[Creative Commons Attribution 4.0 \(CC BY\)](https://creativecommons.org/licenses/by/4.0/)

Adapted from Kaplan-Myrth's version
["Canadian Copyright Term Flowchart"](#)

Note: Where term of copyright expires during a given year, a work enters the public domain on January 1st of the following year.

Canadian Copyright Term and Public Domain (PD) Flowchart

Last updated: 20 April 2021



Prepared by:
Copyright Office, University of Alberta

Note: This information is not intended to be a substitute for legal advice.



[Creative Commons Attribution 4.0 \(CC BY\)](https://creativecommons.org/licenses/by/4.0/)

Adapted from Kaplan-Myrth's version
["Canadian Copyright Term Flowchart"](#)

Note: Where term of copyright expires during a given year, a work enters the public domain on January 1st of the following year.