

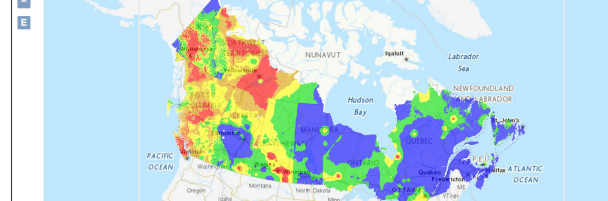
## The Importance of Check-ins



Anyone who has experienced the feeling of a missed check-in from a worker realizes the importance of the check-in. Last week, a research team working in a remote part of northern BC sent three check-ins to their supervisor in a period of 24 hours but the supervisor failed to receive the check-ins on her cell phone and correctly started the escalation procedure as stated in their Field Activity Plan. This resulted in the supervisor calling the RCMP and the RCMP searching far and wide to locate them. Luckily the team was found safe by the RCMP. When you set up a check-in protocol, make sure that the research team sends the check-in but also, that the person receiving the check-in acknowledges receipt. If text messaging, this can mean just texting back, "received". If checking in by voice, then there is no need as connection would mean mutual acknowledgement. If by text, the acknowledgement of receipt is not received then, following up by a voice call or perhaps sending to an email would be in order.

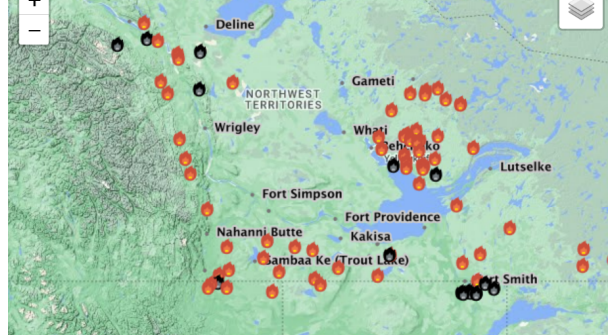
If researchers are sending messages with equipment rented from FRO, we can determine very quickly if they sent messages or tried to place a call from the device and when, as well as the location they sent the last message from. A quick call or email to FRO and we can quickly reassure you and also assist in providing information to the authorities that can help narrow the area of the search.

## Wildfires and Fire Danger Maps



Even with record rainfalls in June in Alberta, the Canadian fire danger map depicts high and extreme risks. The NWT and Yukon maps show many active wildfires. We do have crews going up there this month. Please keep informed about the wildfire situations before heading out and adjust your plans if necessary.

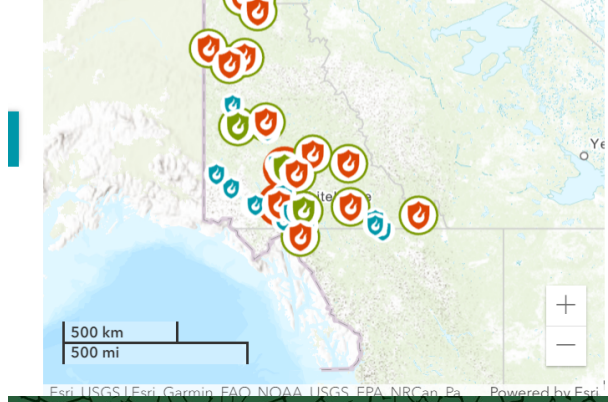
NWT Live Fire Map  
[View full map](#)



**WILDFIRE PREPAREDNESS**

Yukon Wildfires

Current situation    Bulletins    Fire danger ratings    Local info



## NWT Anthrax Outbreak



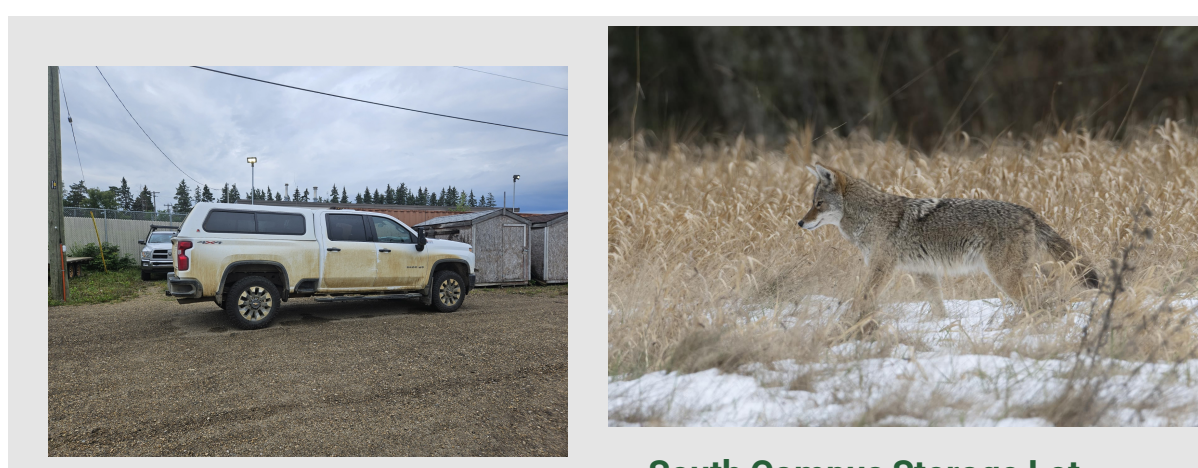
Please see this [CBC article](#) to learn of the N.W.T. anthrax outbreak in the Slave River lowlands between Fort Smith and Fort Resolution. Bison, cattle, horses, and other hoofed mammals are especially sensitive to anthrax or Bacillus anthracis. Researchers should know that IF IN THIS AREA collecting samples, working with wildlife, etc. they can contract the bacteria from direct contact with dead, diseased animals.

Anthrax can cause skin, respiratory or intestinal infection in humans. Though infections are serious and could be fatal, antibiotic treatment controls the disease. If you think you were exposed to anthrax, contact your local health centre immediately. Also, report any contact with anthrax through the [HSE incident reporting portal](#).

## Training

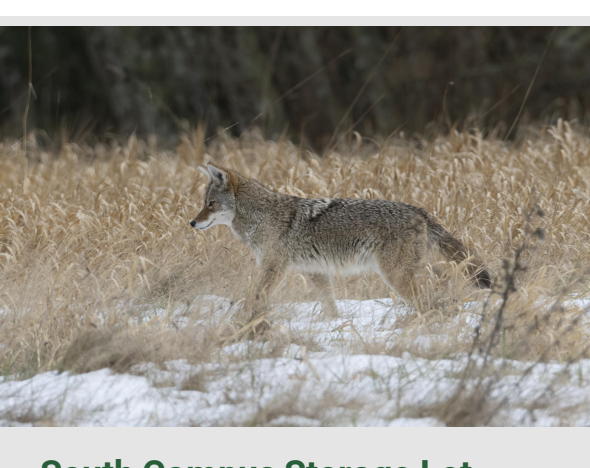
**July 26-28 2023**      Chainsaw Certification has been rescheduled to July 26 - 28, 2023. If interested, please fill out the [online pre-registration form](#).

**Fall, 2023**              If interested in a fall Wilderness First Aid course, please email [fieldoff@ualberta.ca](mailto:fieldoff@ualberta.ca).



**South Campus Storage Lot Parking**

**South Campus Storage Lot**  
Please refrain from blocking in other vehicles when parking out at the South Campus Storage Lot.



**South Campus Storage Lot Hazards**

There has been an increase in coyote activity over the last few weeks at South Campus. Please be vigilant and take necessary precautions should you see a coyote within the compound. Please go to this excellent [City of Edmonton website](#) and become "coyote-wise".

If a coyote makes contact with you or is exhibiting fearful or aggressive behaviour, call 311 and the City can send an Animal Control Officer or a Park ranger out to the area. Also, don't forget to [report](#) the encounter to HSE.

**READ MORE**

## Still Noteworthy



**FRO Equipment Rental Program**

We are thin on our inReach inventory for the rest of the summer but we can still activate satellite phones if you need them. Please give us three business days for the activation and readying of equipment.

We rent satellite phones, inReach devices, first aid kits, and AEDs at cost recovery prices.

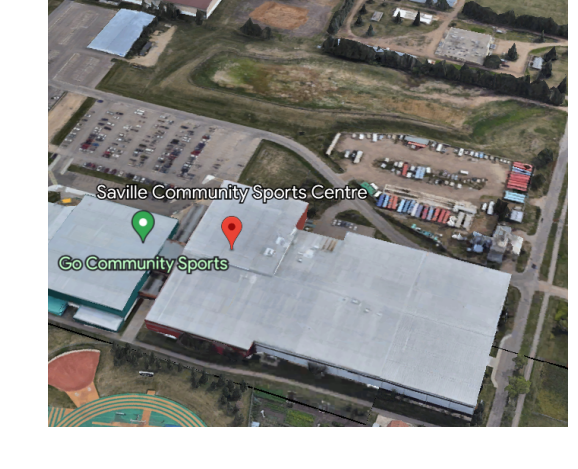
**Sat Phones:** \$35.00 per week plus usage fees

**InReach Devices:** \$25.00/week (15K plan) or \$30/week (Unlimited data plan)

**First Aid Kits:** \$6.00/week.

**AEDs:** free

**BOOK EQUIPMENT**



**ACCESS TO SOUTH CAMPUS STORAGE LOT**

The South Campus Storage Lot (southwest of the Saville Centre) has storage containers and cages for storing combustibles.

All users of the lot must request access online.

**SOUTH CAMPUS STORAGE LOT REGISTRATION FOR ACCESS**



**QUESTIONS?**

If you have any questions or require our advice on Field Activity Plans, hazard assessments, training, etc., please email [fieldoff@ualberta.ca](mailto:fieldoff@ualberta.ca)

## Annual Photo Contest



2023 1st Place Field Research Photo Contest Winner  
Hande Gur  
PhD Student, Teaching Assistant, Co-Editor of Compass  
Department of Anthropology

All those lucky enough to be in the field, consider sharing them for those wonderful photographs with the rest of campus! Why not submit them for the 2023 Field Research Office annual photo contest? Prizes are awarded for first, second and third places as well as the chance to have your photos shared to market the next year's Field Research Information sessions that occur in February and other HSE marketing initiatives. See the great photo depicted above, 2022 first place winner, Hande Gur. Make sure the photos depict the work you are doing!

**Enter the Contest**

## What's New at HSE

**NEW DOCUMENTS/RESOURCES** - review each resource for links to related forms & information

[Incident Lessons Learned - Contact with Poisonous Plant](#) (news item with link to resources)

**EVENTS/COURSES:**

**Working Safely (eLearning)** formerly "Working Safely at the U of A: A Guide to New OHS Legislation" is now live! The updated course reflects changes to the OHS Act and introduces the U of A's Culture of Care Safety Action Plan and Health, Safety, and Environment Management System - *this course is mandatory for all U of A workers and should be retaken every three years or at the request of your supervisor. If you do not complete the original course, please take the latest version. If you are a supervisor, you can choose to take only the HSE Supervisory PD course, or take both courses!*

**JULY IS...**

**Vehicle Theft Prevention Month (USA):** Learn about [reporting U of A vehicle related incidents](#) and review [these tips for preventing vehicle theft \(AMA\)](#)

**International Self Care Day (July 24):** Learn about the [seven pillars of self care](#), including mental wellbeing, risk mitigation, and physical activity.