

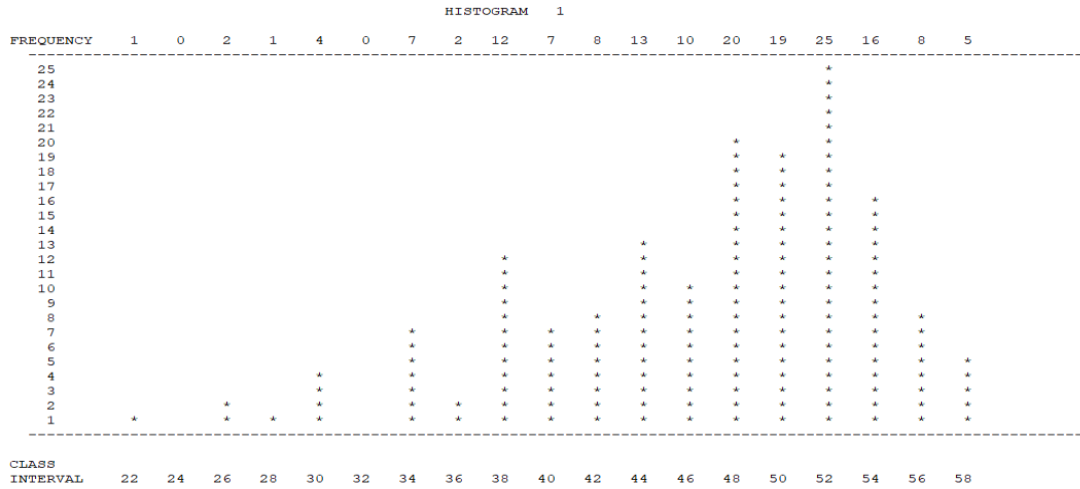
# Item Analysis

\*\*\*\*\*TEST STATISTICS\*\*\*\*\*

NUMBER OF EXAMINEES 160

TOTAL SCORE:

MEAN	46.06
VARIANCE	55.53
STANDARD DEVIATION	7.45
KR-20 RELIABILITY	0.8637
S.E. OF MEASUREMENT	2.7517



## Item Performance

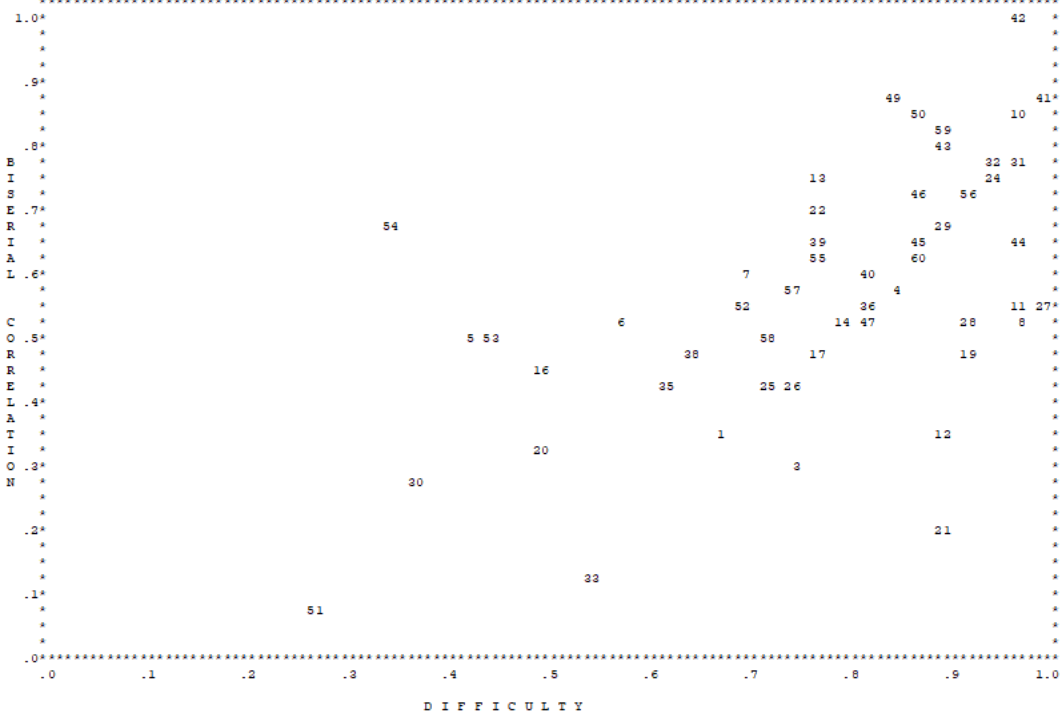
ITEM 1: DIF=0.663, RPB= 0.260, CRPB= 0.196 (95% CON= 0.042, 0.341)  
 RBIS= 0.336, CRBIS= 0.254, IRI=0.123

GROUP	N	INV	NF	OMIT	A	B	C	D+	E
TOTAL	160	0	0	0	0.01	0.01	0.00	0.66	0.32
HIGH	41	0			0.00	0.00	0.00	0.90	0.10
MID	75	0			0.01	0.00	0.00	0.61	0.37
LOW	44	0			0.00	0.05	0.00	0.52	0.43
TEST SCORE MEANS					49.00	31.00	0.00	47.44	43.73
DISCRIMINATING POWER					0.00	-0.05	0.00	0.38	-0.33
STANDARD ERROR OF D.P.					0.00	0.03	0.00	0.10	0.10

ITEM 2: DIF=0.919, RPB= 0.260, CRPB= 0.224 (95% CON= 0.071, 0.366)  
 RBIS= 0.473, CRBIS= 0.406, IRI=0.071

GROUP	N	INV	NF	OMIT	A	B	C	D	E+
TOTAL	160	0	0	0	0.08	0.00	0.01	0.00	0.92
HIGH	41	0			0.00	0.00	0.00	0.00	1.00
MID	75	0			0.08	0.00	0.00	0.00	0.92
LOW	44	0			0.14	0.00	0.02	0.00	0.84
TEST SCORE MEANS					40.33	0.00	30.00	0.00	46.64
DISCRIMINATING POWER					-0.14	0.00	-0.02	0.00	0.16
STANDARD ERROR OF D.P.					0.06	0.00	0.02	0.00	0.06

DISCRIMINATION X DIFFICULTY CHART



ITEMS WITH BISERIAL CORRELATION ZERO OR NEGATIVE:  
9 34

ITEMS WITH OVERLAID POINTS (1ST # OF PAIR IS OBSCURED BY 2ND):  
37- 41, 18- 59, 15- 45, 23- 36, 48- 58, 2- 19,