

# Advancing Community Safety and Wellbeing Policies in Alberta's Communities

An Interactive Knowledge Sharing, Idea Generation, and Networking Event

## What is the Centre for Healthy Communities Innovation Forum?

The Innovation Forum is one of the Centre for Healthy Communities' (CHC) signature events. It is aligned with CHC's ethos of working with intersectoral partners to address the complex issues that impact community health, wellbeing, and sustainability. The Innovation Forum is a platform for connection and collaboration that highlights different voices and perspectives to inspire and inform critical action on the wide range of issues concerning healthy communities.



## Goals for Participants

- Create connections to bridge knowledge and resource gaps
- Develop relationships to support the development of actionable steps in participants' work
- Share knowledge and experiences with different stakeholders
- Be inspired by, learn about, and understand the unique needs and diverse contexts of others working on similar issues
- Develop novel and synergistic approaches to define, achieve, and sustain a healthy community
- Foster new opportunities for networking and collaboration

## Panel Discussion

### Theme

Taking action on community safety and wellbeing policy and intersectoral approaches

### Highlights

- Panelists drew participants' attention to the critical need for coordinated, intersectoral action at municipal, provincial, and national levels.
- The panel showed how the health of individuals depends on their communities, and the policies that create conditions for health and wellbeing.

### Panelists

- **Lisa Allen Scott**, Director, Healthy Settings, Alberta Health Services (AHS) Healthier Together Team; CHC Scientist
- **Gary Teare**, Scientific Director, Provincial and Population Health, Alberta Health Services (AHS) Healthier Together Team; CHC Practice and Scientific Advisory Committee Member
- **Marc Boychuk**, Councillor, Peace River City Council; CHC Practice Affiliate
- **Tyler Gandam**, Mayor, City of Wetaskiwin; President, Alberta Municipalities
- **Val Morrison**, Scientific Advisor, National Collaborating Centre for Healthy Public Policy (NCCHPP)
- Moderator - **Candace Nykiforuk**, CHC Scientific Director

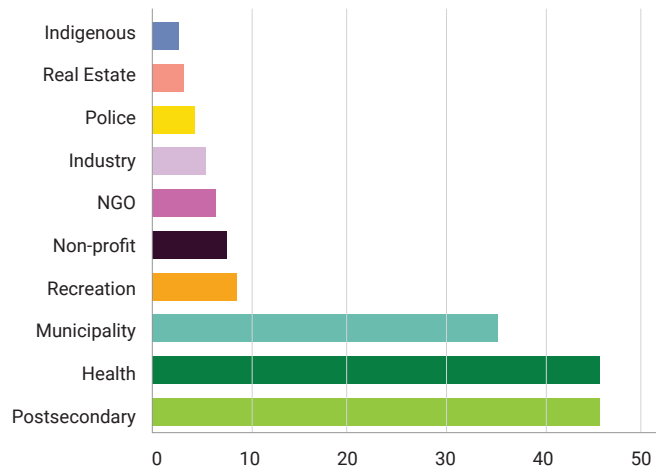


# Community Marketplace Conversations

Community Marketplace Conversations allowed participants from a variety of sectors to engage in visionary conversations, share their experiences, and meet others interested in and working on discussion topics. Across the Community Marketplace Conversations a range of sectors were represented in the discussions, allowing for a diversity of knowledge and experiences to be shared.

An average of 5-8 sectors were represented in each Community Marketplace Conversation.

Sectors Represented at CHC 2023 Innovation Forum

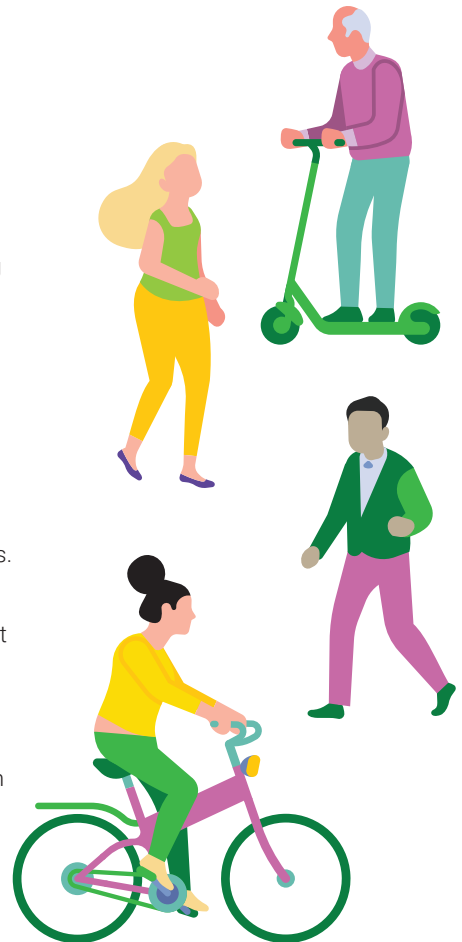


## Conversation Topics

- **Community safety and wellbeing with a focus on unstable housing and equity from a public health perspective**  
 Hosted by: Elaine Hyshka (Associate Professor, School of Public Health; CHC Scientist)
- **Community safety, peoples’ wellbeing, and placemaking**  
 Hosted by: Ian Hosler (Strategy Implementation Coordinator, City of Edmonton; CHC Practice Affiliate)
- **Conversation on domestic and family violence**  
 Hosted by: Stephanie Montesanti (Associate Professor, School of Public Health; CHC Supporting Healthy Indigenous Communities Research Thematic Area Lead) and Elder/Grandmother Jackie Bromley from the Grandmother’s Wisdom Network
- **Creating climate resilient communities through stewardship of water resources - the case for water reuse**  
 Hosted by: Norman Neumann (Professor, School of Public Health; CHC Scientist)
- **Crime prevention through environmental design**  
 Hosted by: Robert Lipka (Principal Urban Designer, City of Edmonton; CHC Practice Affiliate)
- **Homelessness in parks**  
 Hosted by: Alberta Recreation and Parks Association (ARPA) - Steve Allan (Executive Director, ARPA; CHC Practice Affiliate) and CJ Blye (Project Coordinator, ARPA)
- **Intersectoral partnerships for health: challenges and opportunities**  
 Hosted by: Alberta Health Services (AHS) Healthier Together Team – Lisa Allen Scott (Director, Healthy Settings, AHS; CHC Scientist), Gary Teare (Scientific Director, AHS; CHC Practice and Scientific Advisory Committee Member), and Robyn Sheedy (Team Lead, AHS). *Sponsored by Alberta Health Services*
- **Land use policy in rural/smaller communities to support housing choice**  
 Hosted by: Trisha Hampton (Rural Revitalization Coordinator, Rural Development Network). *Sponsored by the Alberta Real Estate Foundation*
- **Micro-mobility (e.g., e-scooter, e-bikes, hoverboards) usage in municipal contexts**  
 Hosted by: Kathy Belton (Director, Injury Prevention Centre; CHC Research Affiliate), Patti Stark (Community Mobilization, Injury Prevention Centre), and Pascal Dumoulin (Health Promotion Facilitator, Alberta Health Services)
- **Municipal collaboration for community safety and wellbeing**  
 Hosted by: Ingrid Hoogenboom (Manager, Partnerships and Evaluation, City of Edmonton)
- **Municipal wellbeing and sustainability policies in the context of climate change**  
 Hosted by: Candace Nykiforuk (Professor, School of Public Health; CHC Scientific Director and Healthy Municipalities and Workplaces Research Thematic Area Lead) and Shelby Yamamoto (Associate Professor, School of Public Health; CHC Scientist)
- **Policy development – setting change approaches to reduce exposure to chronic disease modifiable risk factors**  
 Hosted by: Angeline Webb (Senior Manager Advocacy, Canadian Cancer Society; CHC Practice and Scientific Advisory Committee Member). *Sponsored by the Canadian Cancer Society*
- **Public health and wellbeing policies: what role for communities?**  
 Hosted by: Val Morrison (Scientific Advisor, National Collaborating Centre for Healthy Public Policy). *Sponsored by the National Collaborating Centre for Healthy Public Policy*
- **Public safety and wellbeing: how can we use data and indicators better?**  
 Hosted by: Kayla Atkey (Evaluation Specialist, Edmonton Police Services; CHC Practice Affiliate) and Xinjie Cui (Adjunct Professor, School of Public Health; CHC Scientist)
- **Racism, harassment, and violence**  
 Hosted by: Roman Pabayo (Associate Professor, School of Public Health; CHC Health Equity Research Thematic Area Lead)
- **Urban river valleys: balancing community access and use with sustainable and healthy environments**  
 Hosted by: Simon Otto (Associate Professor, School of Public Health; CHC Healthy Environments Research Thematic Area Lead)

## What We Heard Across Topics

- Multiple – and broader – cross-sectoral partnerships and coalitions are needed for action on community safety and wellbeing policy to be successful in the longer term.
- A large focus on how people can support advocacy and mobilize others around different aspects of community safety and wellbeing. Often, formal spaces are used to make these things happen, but there is an opportunity to think about also mobilizing informal spaces to take action.
- The responsibility for boundary-spanning and moving issues forward often falls on community groups and non-governmental organizations (NGOs), especially for advocacy initiatives – but there is no funding for advocacy. NGOs have limited resources and yet do the heavy lifting of applied research to build evidence – which is often not a funding priority for national funders.
- Need to have open, public discourse and accountability around these issues to foster community awareness and support, particularly about the upstream and complex issues.
- Intersectoral work on community safety and wellbeing policy can look different depending on the issue being tackled. Importantly, people and community should be at the center of the work so that the priority is the population we are working alongside.
- Collaboration and coordination are needed to make better use of data and indicators. Community safety and wellbeing policies should be informed by different kinds of high-quality data, including contextual information and a diversity of perspectives from experiential data from people affected by the issues.



## Sponsor Acknowledgement

This virtual event was hosted by the Centre for Healthy Communities, School of Public Health in partnership with Alberta Health Services, the Alberta Real Estate Foundation, the Canadian Cancer Society, and the National Collaborating Centre for Healthy Public Policy.



Centre de collaboration nationale  
sur les politiques publiques et la santé  
National Collaborating Centre  
for Healthy Public Policy

**Centre for Healthy Communities**  
**School of Public Health, College of Health Sciences**

3-035 Edmonton Clinic Health Academy  
11405-87 Avenue, Edmonton, AB T6G 1C9  
[healthy.communities@ualberta.ca](mailto:healthy.communities@ualberta.ca)

[uab.ca/chc](http://uab.ca/chc)

