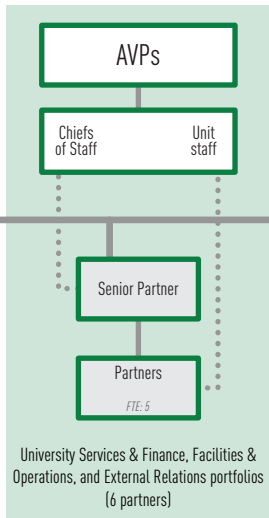


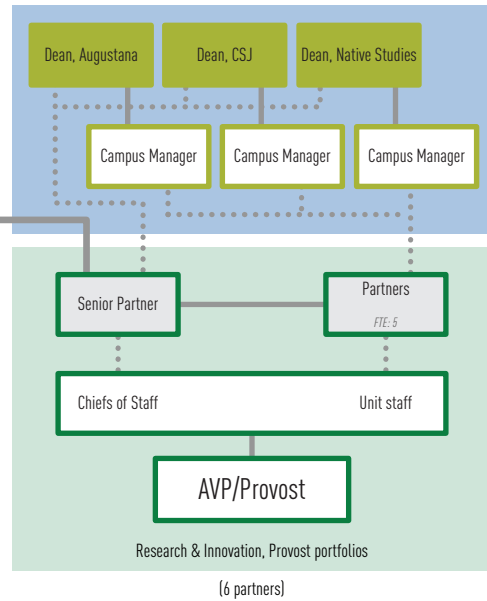
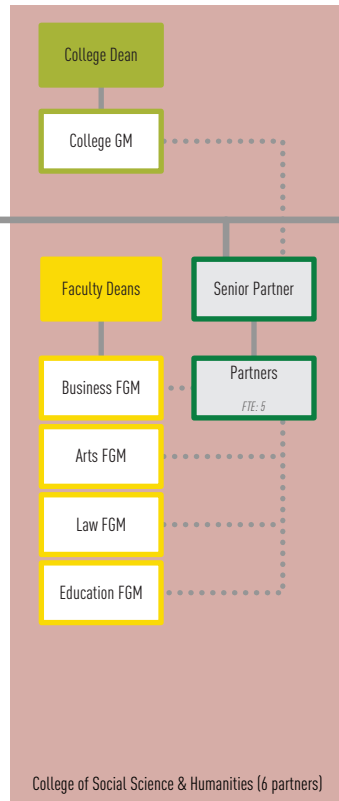
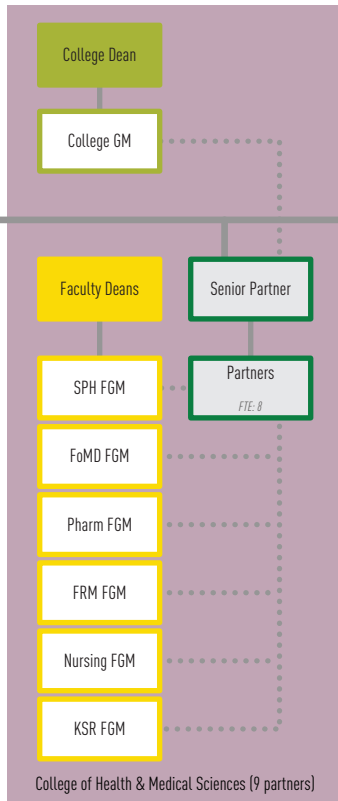
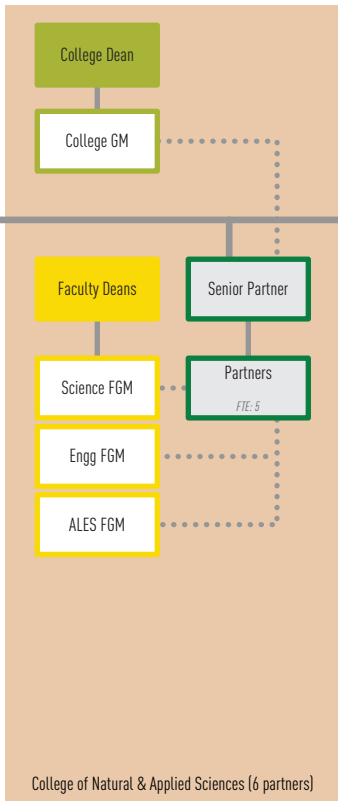
HR partners will be organized at the college level and assigned to faculties based upon the size of the faculty. They will then work with the FGM to ensure HR services are delivered as required.

Senior partners will report directly to the



Director of HR Partnerships. College GMs will have strategic oversight and will work with the Senior Partners to ensure service delivery at the College level.

Total HR partners (including senior partners): 35



LEGEND

AREAS	LEVELS	INDIVIDUALS
University/central	University/central-level	Admin staff
Natural & Applied Sciences	College/portfolio-level	HR partner roles
Health & Medical Sciences	Faculty/unit-level	Academic staff
Social Science & Humanities		
Stand-alone faculties		

FGM = Faculty General Manager