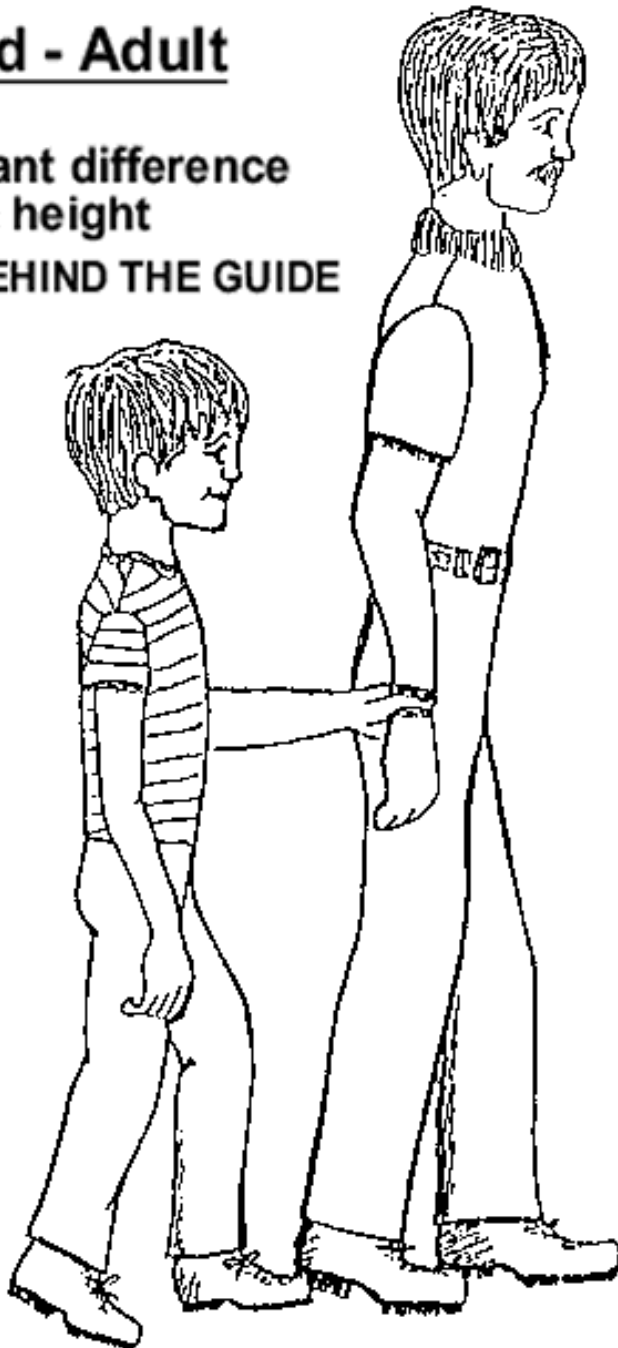


USE OF HUMAN GUIDE

Child - Adult

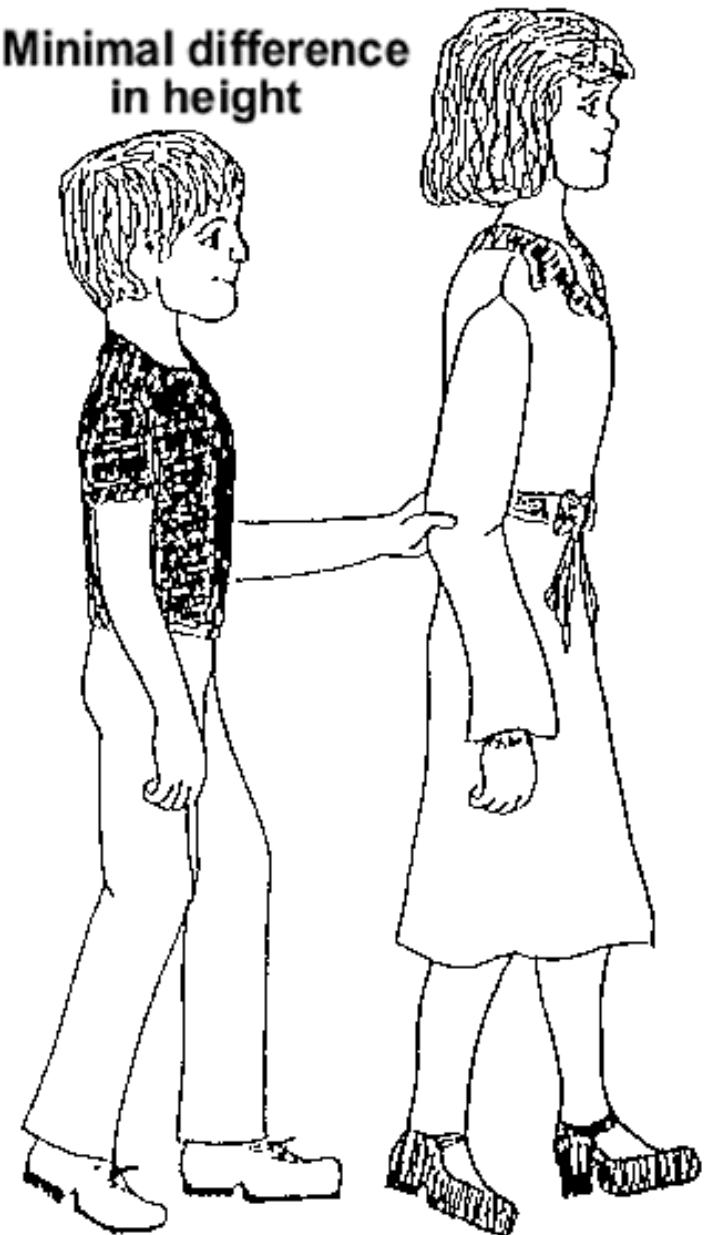
Significant difference
in height

1/2 STEP BEHIND THE GUIDE



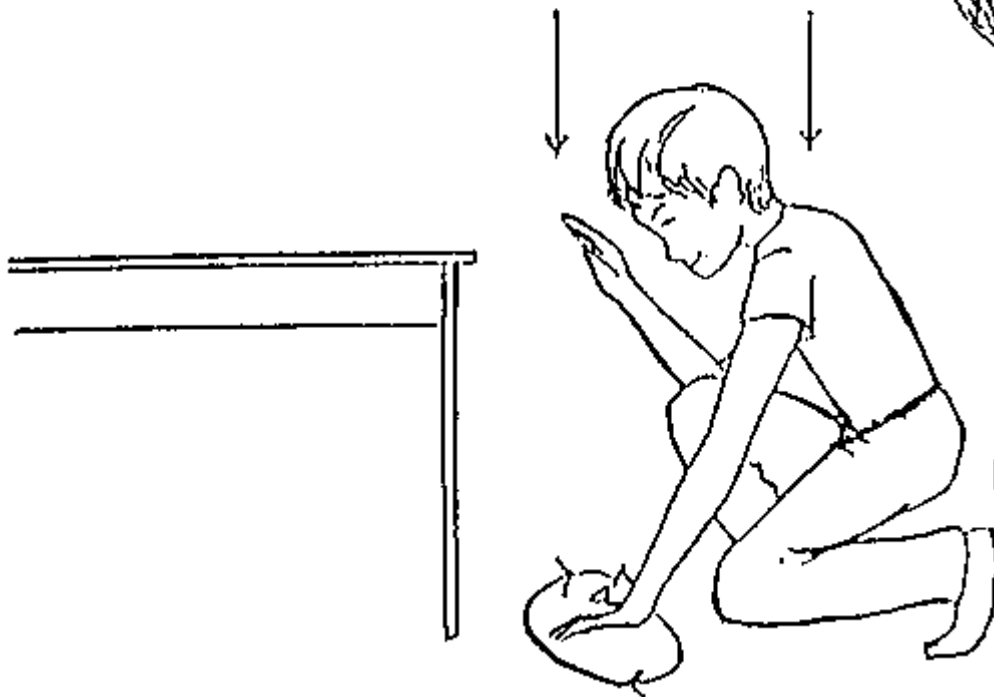
Child - Child

Minimal difference
in height



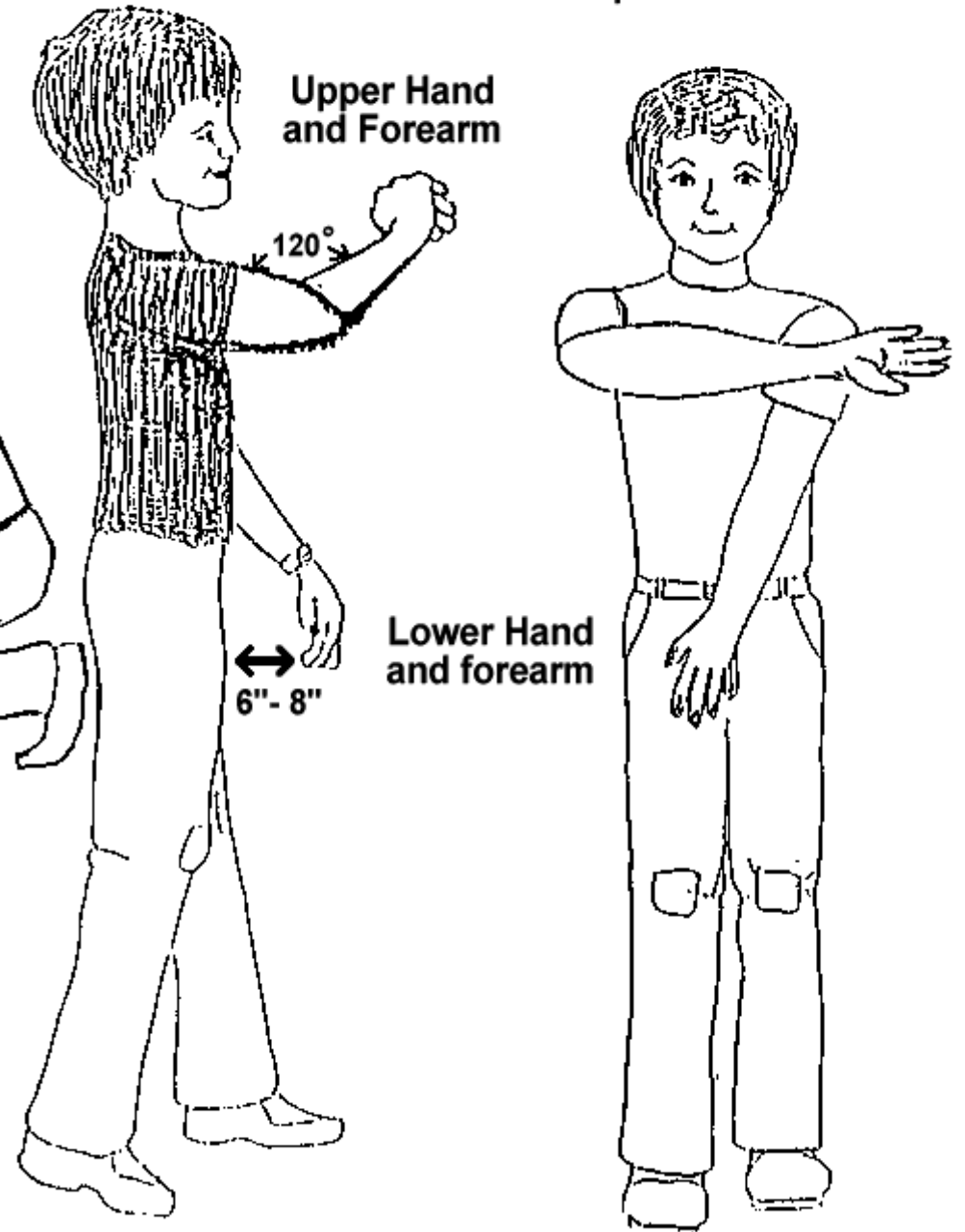
UPPER AND LOWER HAND AND FOREARM Protective Techniques

SAFE DESCENT AND ASCENT



MODIFIED HAND AND FOREARM

HANDS PROTECT HEAD WHILE BENDING



Upper Hand
and Forearm

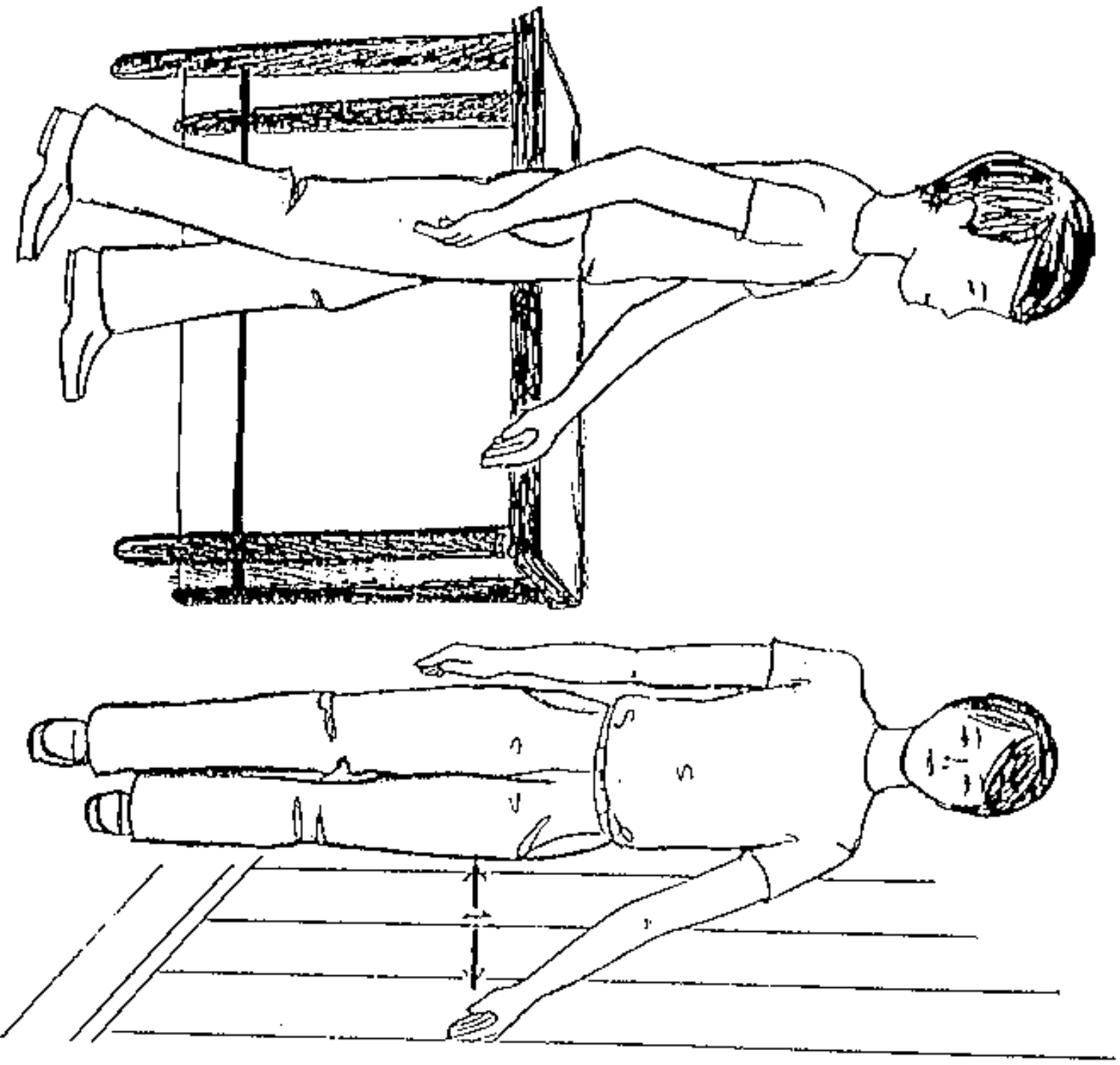
120°

6" - 8"

Lower Hand
and forearm

SIDE VIEW TRAILING TABLE

FRONT VIEW TRAILING WALL



Diagrams adapted from:

A Curriculum Guide for the Development of Body & Sensory

Awareness for the Visually Impaired

- Illinois State Office of Education, 1974